



Flat 1, 43 BELGRAVE CRESCENT, BATH, BA1 5JU
£1,400 per month*

Carter Jonas

A wonderful one bedroom garden level apartment the lower Lansdown slopes in Belgrave Crescent just north of the City Centre in Camden with the benefit of off street parking and garden.

- Kitchen
- Living Room
- Shower Room
- Bedroom
- Garden and terrace
- Off street parking space
- Lovely views

THE PROPERTY

A recently refurbished one bedroom Garden level apartment in Camden, situated in the ever popular Belgrave Crescent, but approached via Pera Place. The light and bright accommodation comprises double bedroom, shower room, large living room with south facing views across the city and kitchen with appliances of fridge/freezer, oven with hob and washing machine. This apartment has been the subject of a very smart refurbishment by the current owner and would suit a professional couple or single. Offered with the benefit of a terrace and garden in addition to an off street parking space. Offered unfurnished and available early January 2025.

EPC Band D. Council Tax Band B. (please check with Bath & North East Somerset website) Holding deposit of one week's rent (deducted from first month's rent) = £323.07 (deducted from first months rent). Five weeks' deposit = £1615.38

Available for an initial 12 month tenancy.

Mains electric, gas and mains water.

Parking: One off street space available and on street parking permit.

Internet & Mobile: Further information on availability and speeds can be found on the Ofcom website.

OUTSIDE

Terrace, garden and off street parking space



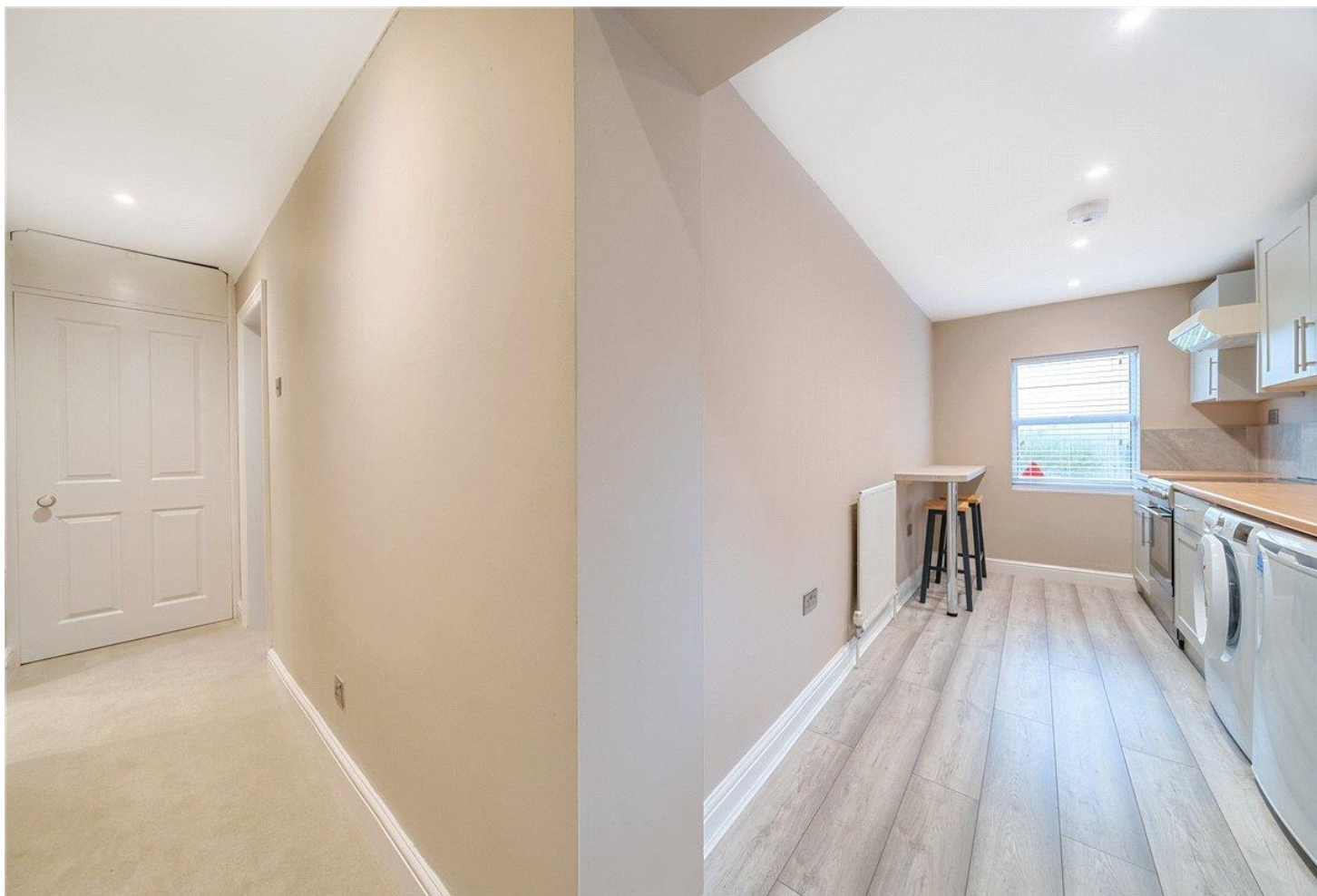
ADDITIONAL INFORMATION

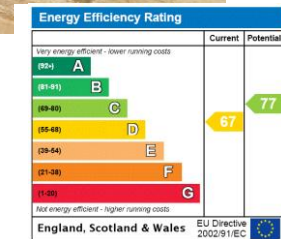
Offers	Available for a minimum term of 12 months longer terms will be considered
--------	---------------------------------------------------------------------------

Viewing	Strictly by appointment
---------	-------------------------

Local Authority	- Council Tax Band B
-----------------	----------------------

Directions	
------------	--





T: 01225 747250

5-6 Wood Street, Bath, Somerset, BA1 2JQ

E: bath@carterjonas.co.uk



Exclusive UK affiliate of

CHRISTIE'S
INTERNATIONAL REAL ESTATE

Classification L2 - Business Data

IMPORTANT INFORMATION

These particulars are for general information purposes only and do not represent an offer or contract or part of one. Carter Jonas or anyone in their employment has made every attempt to ensure that the particulars and other information provided are as accurate as possible and they are not intended to amount to advice on which you should rely as being factually accurate. Full information which may be relevant to your decision regarding the property can be found on the property listing on carterjonas.co.uk or a separately available material information sheet, and we would advise you to confirm the details of any material information prior to any offer being submitted. You should not assume that the property has all necessary planning, building regulations or other consents and Carter Jonas has not tested any services, facilities, or equipment. Any measurements and distances given are approximate only. Where Carter Jonas has been provided with a floorplan by a third party, we cannot guarantee that the floorplan has been measured in accordance with IPMS. Purchasers or prospective tenants must satisfy themselves of all of the aforementioned by independent inspection or otherwise. Our images only represent part of the property as it appeared at the time they were taken and do not represent the furnishings included; these are confirmed in a separate inventory. If you require further information, please contact us. *Administration fees may apply depending on tenancy type. Please contact your local branch for this information.