



BRADFORD ROAD, ATWORTH, SN12 8HY
£4,500 per month*

Carter Jonas

A substantial and stunning period home with contemporary extensions situated in the sought-after village of Atworth in Wiltshire.

- Kitchen
- Dining Room
- Living Room
- Utility Room
- 4/5 bedrooms
- 2 bathrooms
- Gardens

THE PROPERTY

Set within its own large level gardens and behind a remote controlled electronic gated entrance, offering complete privacy, there is driveway parking for at least four cars in addition to an electric vehicle charging point.

The accommodation is decorated to an exceptional standard, arranged over two floors with open plan spacious living to include four good sized bedrooms with an en-suite shower room to the principal, and fifth bedroom which can also be used as a study on the ground floor and adjacent to the Sitting Room.

The newly installed expansive kitchen features solid wooden cabinetry by Handmade Kitchens of Christchurch, including a copper topped kitchen island with built in microwave and wine cooler, new AGA with induction hob and quartz worktops.

The gardens that surround the house are large, level and enclosed with several fruit trees, looking out on to beautiful open fields and the Wiltshire countryside beyond. These views can further be enjoyed and appreciated from the wrap around verandah or from the first floor balcony area.

This is a wonderful family home and is being offered to the market furnished for a minimum period of twelve months from early December 2024.

Available for an initial 12 month tenancy.

EPC Rating C. Council Tax Band F (please see Wiltshire County Council website for current cost)



Mains electric, gas and metered mains water.

Parking: to the front of the property for approx. 4 or 5 vehicles, approached via a gated driveway.

Additional: PLEASE NOTE THERE IS AN ANNEXE TO THE REAR OF THE GARDEN THAT IS PRIVATE FROM THE MAIN HOUSE WITH A SEPARATE ACCESS THAT IS NOT INCLUDED WITH ANY TENANCY AT THIS PROPERTY.

Internet & Mobile: Further information on availability and speeds can be found on the Ofcom website.

EPC Band C. Council Tax Band F. One weeks' rent as a holding deposit = £1,038.46 (deducted from first month's rent). Six weeks' deposit = £6,230.76

ADDITIONAL INFORMATION

Offers	Available for a minimum term of 12 months longer terms will be considered
--------	---

Viewing	Strictly by appointment
---------	-------------------------

Local Authority	- Council Tax Band F
-----------------	----------------------

Directions	
------------	--





Bradford Road, Atworth, SN12

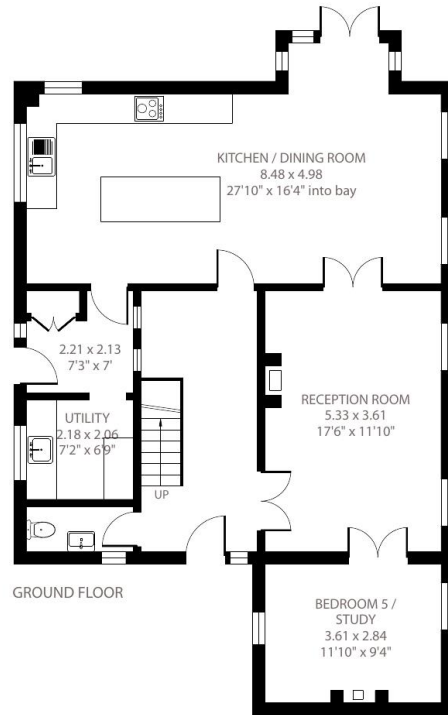
Approximate Area = 1869 sq ft / 173.6 sq m

Limited Use Area(s) = 49 sq ft / 4.5 sq m

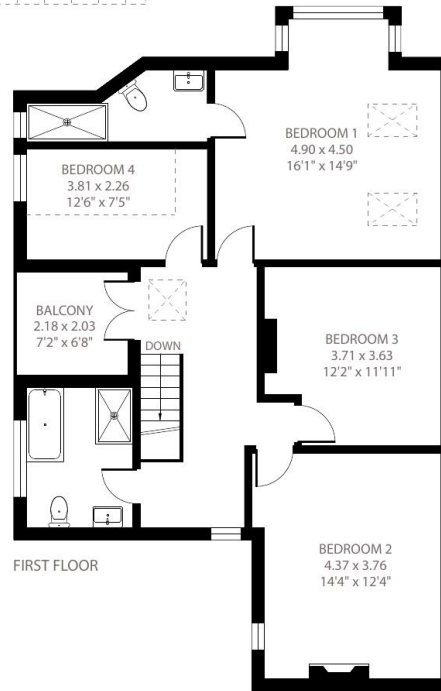
Total = 1918 sq ft / 178.1 sq m

For identification only - Not to scale

Denotes restricted
head height



GROUND FLOOR



FIRST FLOOR



Certified
Property
Measurer

Floor plan produced in accordance with RICS Property Measurement Standards incorporating International Property Measurement Standards (IPMS2 Residential). © nlcocom 2023. Produced for Carter Jonas. REF: 1049340

T: 01225 747250

5-6 Wood Street, Bath, Somerset, BA1 2JQ

E: bath@carterjonas.co.uk

A member of



Exclusive UK affiliate of

CHRISTIE'S
INTERNATIONAL REAL ESTATE

Classification L2 - Business Data



IMPORTANT INFORMATION

These particulars are for general information purposes only and do not represent an offer or contract or part of one. Carter Jonas or anyone in their employment has made every attempt to ensure that the particulars and other information provided are as accurate as possible and they are not intended to amount to advice on which you should rely as being factually accurate. Full information which may be relevant to your decision regarding the property can be found on the property listing on carterjonas.co.uk or a separately available material information sheet, and we would advise you to confirm the details of any material information prior to any offer being submitted. You should not assume that the property has all necessary planning, building regulations or other consents and Carter Jonas has not tested any services, facilities, or equipment. Any measurements and distances given are approximate only. Where Carter Jonas has been provided with a floorplan by a third party, we cannot guarantee that the floorplan has been measured in accordance with IPMS. Purchasers or prospective tenants must satisfy themselves of all of the aforementioned by independent inspection or otherwise. Our images only represent part of the property as it appeared at the time they were taken and do not represent the furnishings included; these are confirmed in a separate inventory. If you require further information, please contact us. *Administration fees may apply depending on tenancy type. Please contact your local branch for this information.