



VICTORIA BRIDGE ROAD, BATH, BA2 3GG

£1,550 per month*

Carter Jonas

21 ROYAL VIEW, VICTORIA BRIDGE ROAD, BATH,

- Double bedroom
- Bathroom
- Balcony
- Open-plan kitchen and living
- Great views

THE PROPERTY

A modern one double bedroom apartment in the popular Bath Riverside development. Royal View occupies a prominent position on the development and enjoys fabulous views. The property enjoys wonderful space and light with an open plan kitchen / living room with large doors onto balcony. The kitchen has integrated appliances of fridge/freezer, electric oven, dishwasher and a washing machine housed in a separate utilities cupboard. The bathroom has a bath with shower over bath. The bedroom has a built in wardrobe. The property is offered furnished. The Bath Riverside development is extremely convenient for those wanting to be in and around the city centre with buses frequently running into the city as well as the convenience of an approximate 15 minute walk to the centre. Available from 2nd July 2025

Available for an initial 12 month tenancy.

EPC Rating B. Council Tax Band C (please see Bath & North East Somerset website for current cost)

Mains electric, and metered mains water. Electric central heating.

Internet & Mobile: Further information on availability and speeds can be found on the Ofcom website.

A modern one double bedroom apartment in the popular Bath Riverside development.



At a rent of £1,550 per calendar month: Holding deposit of 1 week's rent £357.69 (to be deducted from first month's rent) Security deposit of 5 weeks rent £1,788.45

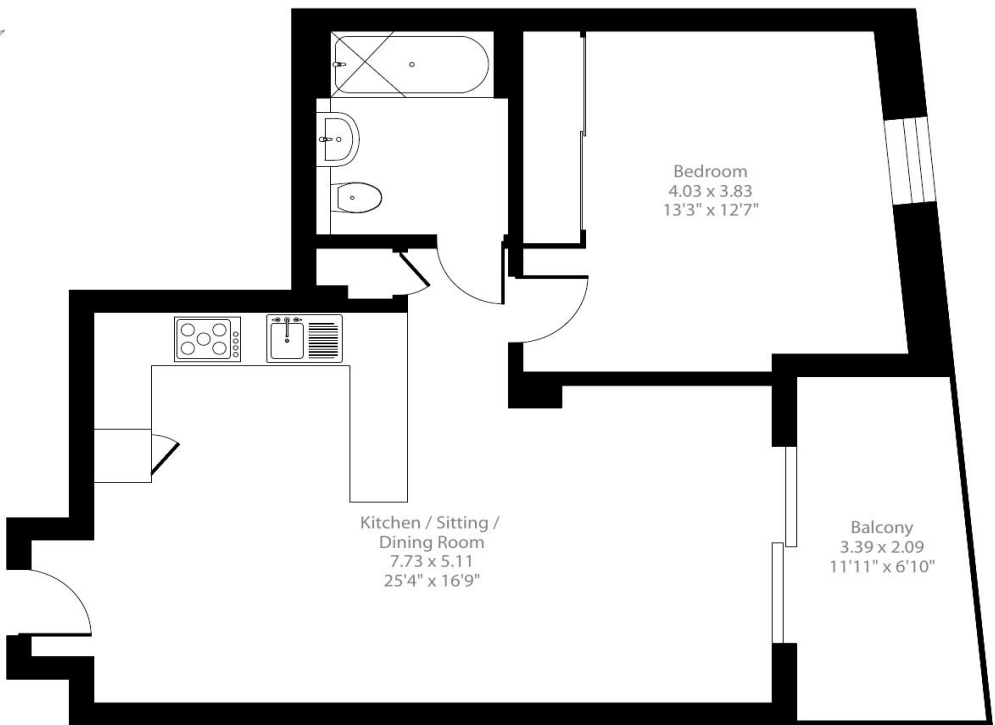
ADDITIONAL INFORMATION

Offers	Available for a minimum term of 12 months longer terms will be considered
Viewing	Strictly by appointment
Local Authority	Bath and North East Somerset, Bath - Council Tax Band C
Directions	



Royal View, Victoria Bridge Road, Bath, BA2

Approximate Area = 552 sq ft / 51.2 sq m
For identification only - Not to scale



First Floor

Energy Efficiency Rating		
	Current	Potential
Very energy efficient - lower running costs		
(92+) A		
(81-91) B	84	84
(69-80) C		
(55-68) D		
(39-54) E		
(21-38) F		
(1-20) G		
Not energy efficient - higher running costs		
England, Scotland & Wales	EU Directive 2002/91/EC	

Floor plan produced in accordance with RICS Property Measurement 2nd Edition, Incorporating International Property Measurement Standards (IPMS2 Residential). © nchecon 2025. Produced for Carter Jonas. REF: 1312659

T: 01225 747250
5-6 Wood Street, Bath, Somerset, BA1 2JQ
E: bath@carterjonas.co.uk



Exclusive UK affiliate of
CHRISTIE'S
INTERNATIONAL REAL ESTATE

Classification L2 - Business Data

IMPORTANT INFORMATION
These particulars are for general information purposes only and do not represent an offer or contract or part of one. Carter Jonas or anyone in their employment has made every attempt to ensure that the particulars and other information provided are as accurate as possible and they are not intended to amount to advice on which you should rely as being factually accurate. Full information which may be relevant to your decision regarding the property can be found on the property listing on carterjonas.co.uk or a separately available material information sheet, and we would advise you to confirm the details of any material information prior to any offer being submitted. You should not assume that the property has all necessary planning, building regulations or other consents and Carter Jonas has not tested any services, facilities, or equipment. Any measurements and distances given are approximate only. Where Carter Jonas has been provided with a floorplan by a third party, we cannot guarantee that the floorplan has been measured in accordance with IPMS. Purchasers or prospective tenants must satisfy themselves of all of the aforementioned by independent inspection or otherwise. Our images only represent part of the property as it appeared at the time they were taken and do not represent the furnishings included; these are confirmed in a separate inventory. If you require further information, please contact us. *Administration fees may apply depending on tenancy type. Please contact your local branch for this information.