



SOMERSET PLACE, BATH, BA1 5AD
£4,000 per month*

Carter Jonas

SOMERSET PLACE, BATH, SOMERSET

- Sitting Room
- Kitchen/Dining Room
- 3 Bedrooms
- 2 Bathrooms
- Utility cupboard
- Wonderful terrace and garden

THE PROPERTY

11 Somerset Place is an elegant Grade I Listed Georgian maisonette close to Bath city centre and forms part of the acclaimed serpentine line of buildings extending from Lansdown

Place East. Recently renovated to a particularly high spec, no. 11 offers stylish and immaculate accommodation. Upon entering the grand reception hallway, the private entrance leads to an inner hallway through to Living Room with sash windows facing south across the Gardens at Somerset Place and to Bath beyond. To the rear of the ground floor is the Kitchen/Dining Room having French Doors out onto the terrace and garden. The kitchen has all integrated appliances of fridge/freezer, double oven and separate induction hob, dishwasher and wine cooler fridge. There is also a cloakroom on the ground floor. Stairs lead down from the private hallway to master bedroom, having built in wardrobes and large en suite bathroom having bath and separate walk-in shower. There are French doors from the master bedroom onto a lower courtyard. There are two further bedrooms on this floor, one having walk in wardrobe, and a 2nd bathroom with shower over bath in addition to a washing machine in a small utility room.

Accessed from the Kitchen/Dining room, the rear garden and terrace has been elegantly terraced and offers seating areas and an area of lawn. Permit parking is available

Many local amenities are provided in nearby St. James's Square, Margaret's Buildings and Brock Street that offer a variety of shops

including a café, newsagent, chemist, florist and deli, along with art galleries and restaurants. Royal Victoria Park is also nearby.

A most stunning Ground and Lower Floor Maisonette with 3 bedrooms, 2 bathrooms, wonderful private rear terrace and garden in one of Bath's most elegant locations.



The city of Bath is within a short walk.

This really is a most impressive apartment situated in one of Bath's most elegant locations. Offered unfurnished and available from the beginning of August.

Available for an initial 12-month tenancy.

EPC Rating D. Council Tax Band G (please see BANES website for current cost)

Mains electric, gas and metered mains water.

ADDITIONAL INFORMATION

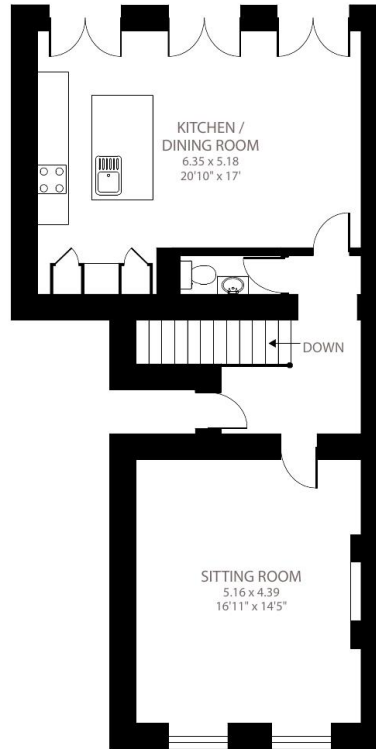
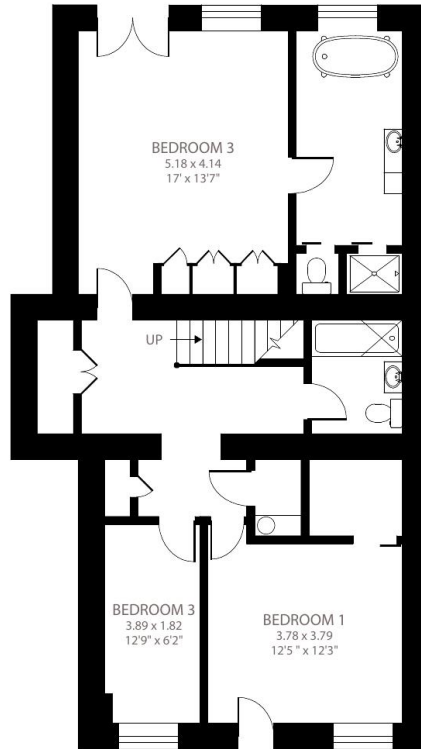
Offers	Available for a minimum term of 12 months longer terms will be considered
Viewing	Strictly by appointment
Local Authority	Bath and North East Somerset, Bath - Council Tax Band G



Somerset Place, Bath, BA1

Approximate Area = 1640 sq ft / 152.3 sq m

For identification only - Not to scale



Certified
Property
Measurer

Floor plan produced in accordance with RICS Property Measurement Standards incorporating International Property Measurement Standards (IPMS2 Residential). © nclchem 2022. Produced for Carter Jonas. REF: 874835

Energy Efficiency Rating		
	Current	Potential
Very energy efficient - lower running costs		
(90+) A		
(81-90) B		
(69-80) C		
(55-68) D	68	68
(39-54) E		
(21-38) F		
(1-20) G		
Not energy efficient - higher running costs		
England, Scotland & Wales		
EU Directive 2002/91/EC		

T: 01225 747250

5-6 Wood Street, Bath, Somerset, BA1 2JQ

E: bath@carterjonas.co.uk

A member of



Exclusive UK affiliate of

CHRISTIE'S
INTERNATIONAL REAL ESTATE

Classification L2 - Business Data



IMPORTANT INFORMATION

These particulars are for general information purposes only and do not represent an offer or contract or part of one. Carter Jonas or anyone in their employment has made every attempt to ensure that the particulars and other information provided are as accurate as possible and they are not intended to amount to advice on which you should rely as being factually accurate. Full information which may be relevant to your decision regarding the property can be found on the property listing on carterjonas.co.uk or a separately available material information sheet, and we would advise you to confirm the details of any material information prior to any offer being submitted. You should not assume that the property has all necessary planning, building regulations or other consents and Carter Jonas has not tested any services, facilities, or equipment. Any measurements and distances given are approximate only. Where Carter Jonas has been provided with a floorplan by a third party, we cannot guarantee that the floorplan has been measured in accordance with IPMS. Purchasers or prospective tenants must satisfy themselves of all of the aforementioned by independent inspection or otherwise. Our images only represent part of the property as it appeared at the time they were taken and do not represent the furnishings included; these are confirmed in a separate inventory. If you require further information, please contact us. *Administration fees may apply depending on tenancy type. Please contact your local branch for this information.