



GEORGE LANE, MARLBOROUGH, SN8
£850 per month*

Carter Jonas

PURCELLS COURT, GEORGE LANE, MARLBOROUGH, WILTSHIRE, SN8

This over 55's apartment is situated in Purcells Court in the centre of Marlborough. Only a five minute walk away is the highly popular high street which offers an eclectic mix of independent shops, high end retailers, pubs, cafes and restaurants.

This PART FURNISHED apartment comprises an entrance hallway, bathroom with walk-in shower, main double bedroom, second single bedroom, fitted kitchen with built in oven and hob, a fridge freezer, and dishwasher as well as a breakfast bar. There is a spacious main reception room filled with natural light. Renting at Purcells Court has the benefit of a 'Lifeline' personal alarm service which provides '24/7 immediate support 365 days a year', in addition to this there is an on-site scheme manger for 2 hours each day Monday to Friday. There is a communal Laundry room if needed and communal gardens.

Available for an initial 12 month tenancy.

EPC Rating C

Council Tax Band: C (Wiltshire website for current cost)

Mains water and drainage. Electric heating.

Internet & Mobile: Further information on availability and speeds can be found on the Ofcom website.

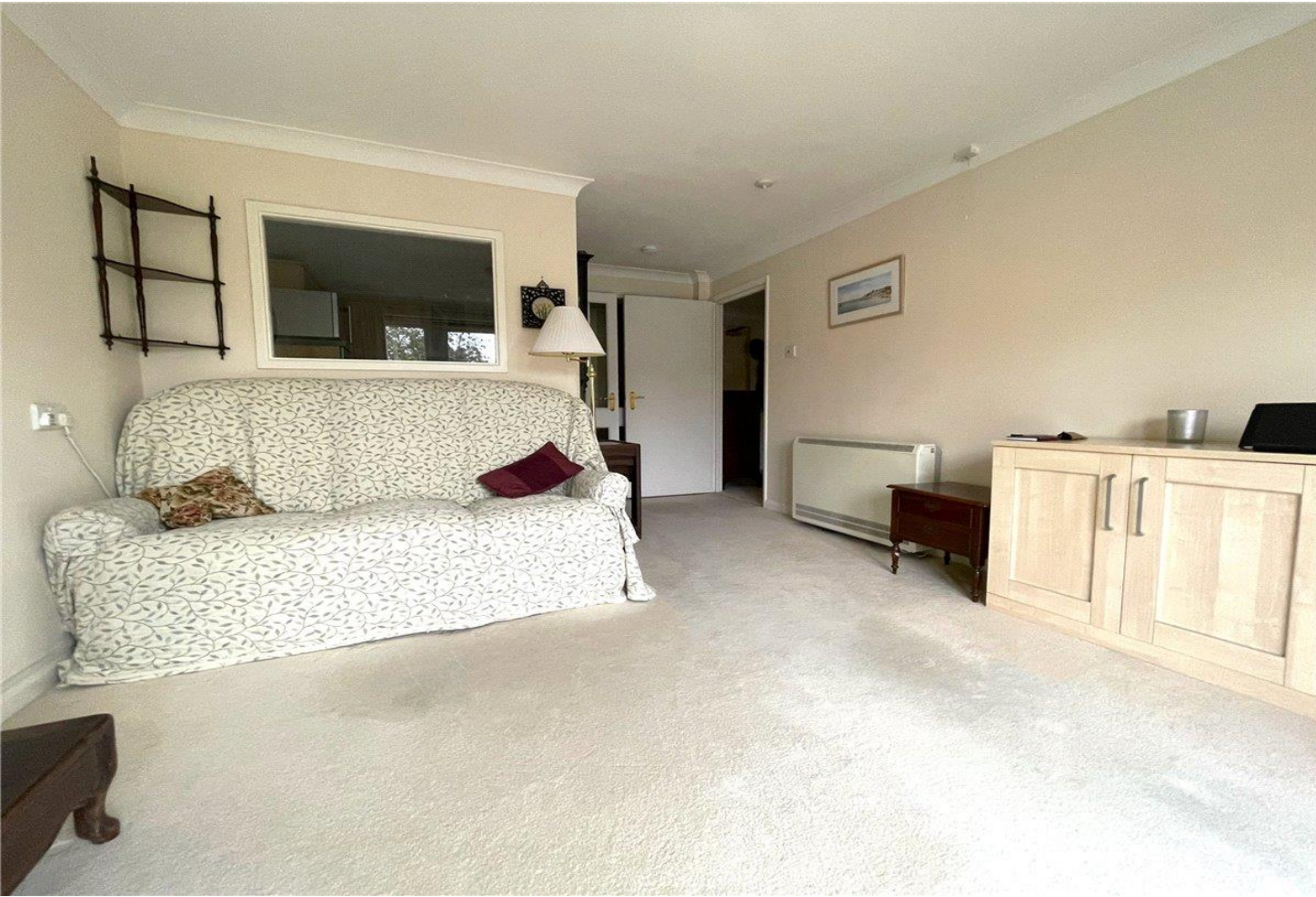
At a rent of £850 per calendar month: Holding deposit of 1 week's rent £196 Security deposit of 5 weeks rent £980.

A two bedroom ground floor flat in this over 55's development with off street parking situated in the centre of Marlborough.



ADDITIONAL INFORMATION

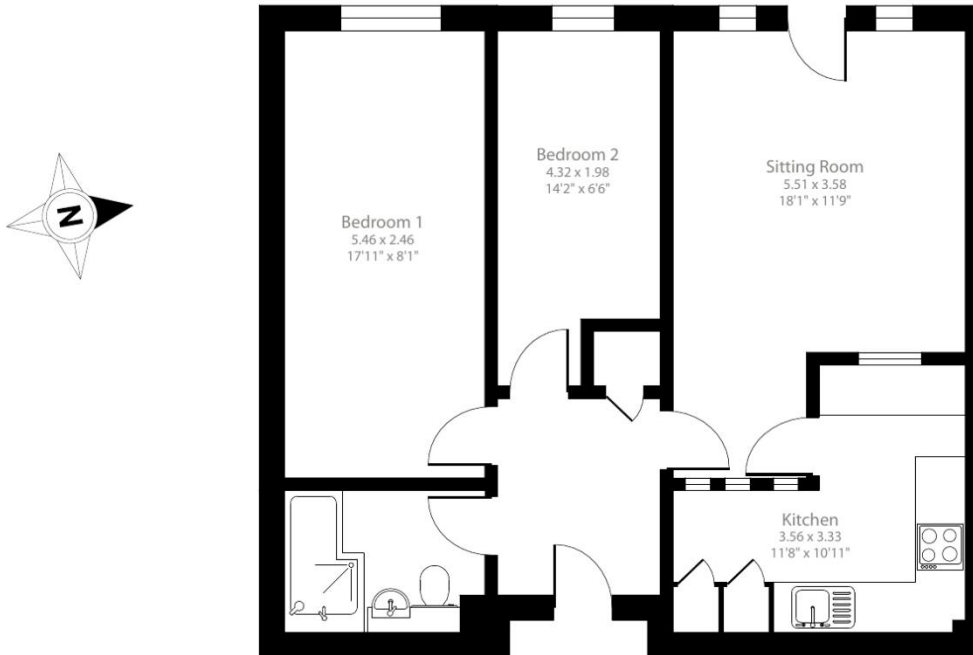
Offers	12 months initially
Viewing	Strictly by appointment
Local Authority	Wiltshire Council - Council Tax Band C



George Lane, Marlborough, SN8

Approximate Area = 640 sq ft / 59.5 sq m

For identification only - Not to scale



Ground Floor



Floor plan produced in accordance with RICS Property Measurement 2nd Edition, Incorporating International Property Measurement Standards (IPMS2 Residential). © nitchcom 2025. Produced for Carter Jonas. REF: 1300141

T: 01672 519700

93-94 High Street, Marlborough, Wiltshire, SN8 1HD

E: marlborough@carterjonas.co.uk

A member of



Exclusive UK affiliate of

CHRISTIE'S
INTERNATIONAL REAL ESTATE

Classification L2 - Business Data

IMPORTANT INFORMATION

Our property particulars do not represent an offer or contract, or part of one. The information given is without responsibility on the part of the agents, seller(s) or lessor(s) and you should not rely on the information as being factually accurate about the property, its condition or its value. Neither Carter Jonas LLP nor anyone in its employment or acting on its behalf has authority to make any representation or warranty in relation to this property. We have not carried out a detailed survey, nor tested the services, appliances or fittings at the property. The images shown may only represent part of the property and are as they appeared at the time of being photographed. The areas, measurements and distances are approximate only. Where Carter Jonas have been provided with a floorplan by a third party, we can not guarantee that the floorplan has been measured in accordance with IPMS. Any reference to alterations or use does not mean that any necessary planning permission, building regulation or other consent has been obtained. The VAT position relating to the property may change without notice. Administration fees may apply depending on tenancy type. Please contact your local branch for this information.