



WHATLEY DRIVE,
PEWSEY

Carter Jonas

6 WHATLEY DRIVE, PEWSEY, WILTSHIRE, SN9 5AR

AMENITIES

- Freehold
- Service charges c£720pa
- Entrance Hall
- Cloakroom
- Kitchen
- Living/Dining room
- Master Bedroom with En-suite
- 1 Further Bedroom
- Bathroom
- Courtyard Garden
- Allocated Parking

SITUATION

6 Whatley Drive is ideally placed for all local facilities and the mainline station. Pewsey is an historic town with origins stretching back to Saxon times, and is small thriving community set in the beautiful Wiltshire downland countryside of the Pewsey Vale. It offers schools, a bistro, shops, a sports centre with swimming pool and a traditional country market. Communications are excellent as Pewsey is served by a mainline station. London (Paddington) is approximately one hour away. The historic market town of Marlborough is some 6 miles to the north and some 12 miles beyond is the access to the M4 motorway.

DESCRIPTION

Constructed to a high specification by Redcliffe Homes in 2014, this former show home combines contemporary and traditional features including solid wood casement windows, oak veneer doors with chrome door furniture and a fully fitted kitchen with AEG integrated appliances. The good-sized sitting room has French doors opening to the rear garden.

The first floor comprises a principal bedroom with en-suite shower room. Both this and the main bathroom are fitted with Roca sanitary ware and Hansgrohe showers in the family bathroom. The second bedroom is also a good double room.

Designed exclusively for the over 55's the property is set around courtyard garden with its own patio providing the ideal 'al fresco' dining area. Outside there is a courtyard garden together with a communal area and allocated parking space.

OUTSIDE

A lawned communal area with private patio and an allocated parking space.

A DELIGHTFUL TWO BEDROOM PROPERTY FOR THE OVER 55'S, PRESENTED IN VERY GOOD ORDER THROUGHOUT.



SERVICES AND MATERIAL INFORMATION

- Freehold
- Service charge c£720pa for management of communal grounds
- Mains water, mains drainage. Air Source Heat Pump.
- Council tax band: C - <https://www.wiltshire.gov.uk/article/7069/Council-tax-bands-and-charges>
- Energy efficiency rating: TBC
- Broadband and mobile coverage. Please refer to <https://checker.ofcom.org.uk/>

GUIDE PRICE: £275,000 (Subject to Contract)

VIEWING ARRANGEMENTS: By appointment with the Marlborough Office



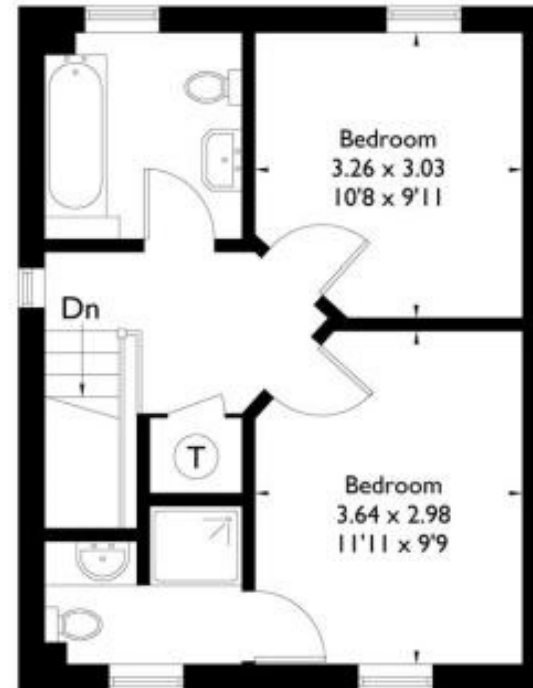
Classification L2 - Business Data

6 Whatley Drive, Pewsey, SN9 5AR

Approximate Gross Internal Area = 83.4 sq m / 898 sq ft



Ground Floor



First Floor

This plan is for layout guidance only. Drawn in accordance with RICS guidelines. Not drawn to scale unless stated. Windows & door openings are approximate. Whilst every care is taken in the preparation of this plan, please check all dimensions, shapes & compass bearings before making any decisions reliant upon them.

Marlborough 01672 514 916
93 High Street, Marlborough, SN8 1HD

carterjonas.co.uk
Offices throughout the UK

Exclusive UK affiliate of
CHRISTIE'S
INTERNATIONAL REAL ESTATE

IMPORTANT INFORMATION

These particulars are for general information purposes only and do not represent an offer or contract or part of one. Carter Jonas or anyone in their employment has made every attempt to ensure that the particulars and other information provided are as accurate as possible and they are not intended to amount to advice on which you should rely as being factually accurate. Full information which may be relevant to your decision regarding the property can be found on the property listing on carterjonas.co.uk or, (including off market properties) on the brochure or a separately available material information sheet. We would advise you to confirm the details of any material information prior to any offer being submitted. You should not assume that the property has all necessary planning, building regulations or other consents and Carter Jonas has not tested any services, facilities or equipment. Any measurements and distances given are approximate only. Where Carter Jonas has been provided with a floorplan by a third party, we cannot guarantee that the floorplan has been measured in accordance with IPMS. Purchasers must satisfy themselves of all of the aforementioned by independent inspection or otherwise. Our images only represent part of the property as it appeared at the time they were taken and do not represent the furnishings included; these are confirmed in a separate inventory. If you require further information, please contact us.

Classification L2 - Business Data