



**ALBANY STREET, LONDON, NW1**  
£1,500,000

**Carter Jonas**

## ALBANY STREET, LONDON, NW1

This handsome wide home is configured to give a spacious reception room, separate kitchen, WC and formal dining room all on the ground floor. On the first floor is a large principal bedroom with separate dressing area, built in wardrobes and ensuite bathroom. A further double bedroom and separate family bathroom. The lower ground floor has the third bedroom, study, utility room and spacious storage cupboard. The lower ground floor can be accessed separately via its own front door.

Albany Street is conveniently located in close proximity to Primrose Hill Village, Camden High Street and is also within easy walking distance of the green open spaces of both Primrose Hill (0.6 miles) & Regent's Park (0.3 miles).

### AMENITIES

- Three Double Bedrooms
- Two Bathrooms
- Grade II Listed
- Close to Regents Park
- Double Fronted
- Chain Free

**TENURE** Leasehold from 10 October 1998 to 4 April 2131

**LOCAL AUTHORITY** Camden

**COUNCIL BAND** G

**GROUND RENT** £1500 per annum

**A CLASSICAL JOHN NASH ARCHITECTURE DESIGNED DOUBLE FRONTED HOUSE  
SITUATED ON THE CROWN ESTATE AND MOMENTS AWAY FROM REGENTS PARK.**





Classification L2 - Business Data

## 219 Albany Street, NW1

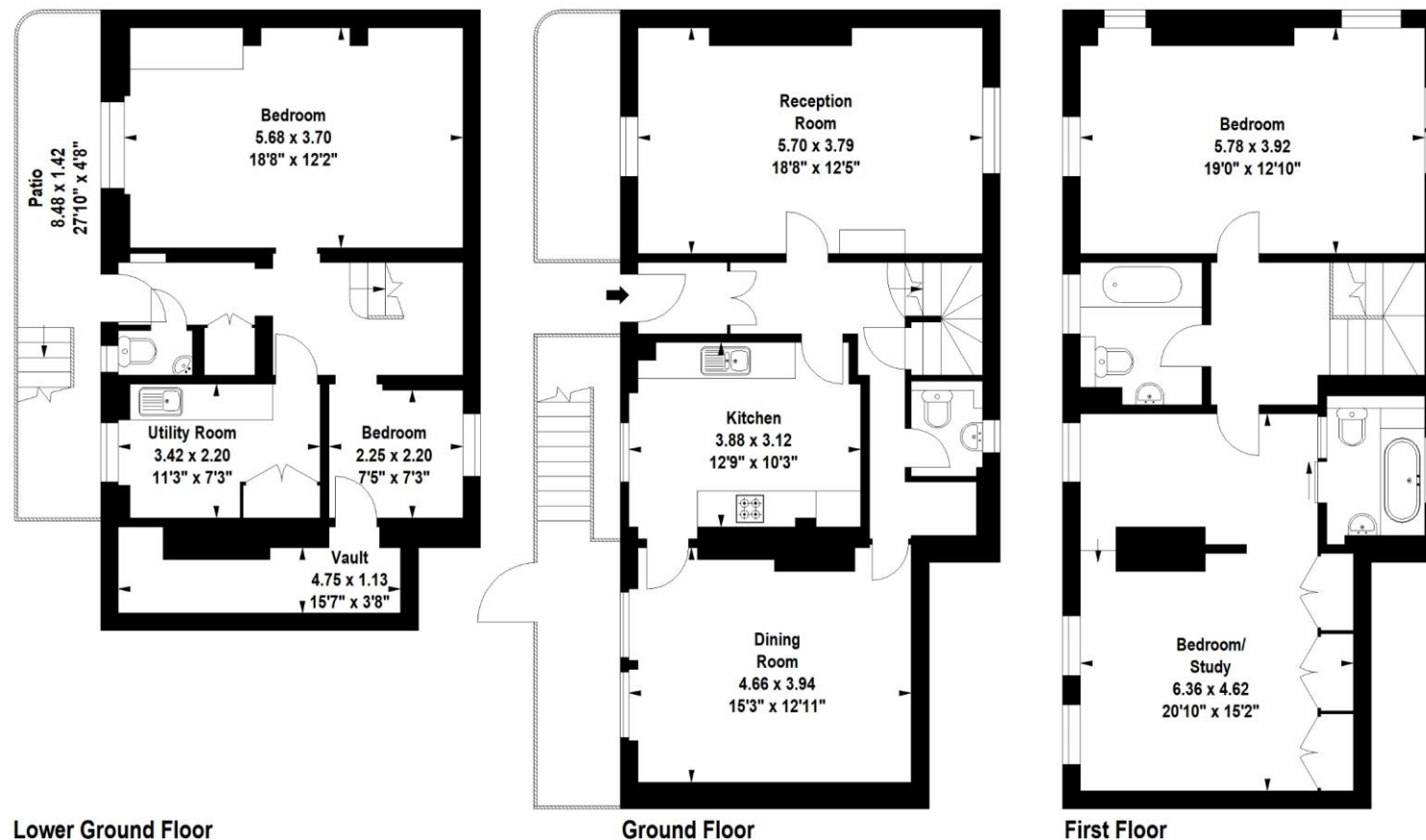
Gross internal area (approx)

2073 sq m (192.58 sq ft)

For Identification Purposes Only. Not To Scale.

All Calculations include Any/All Areas Under 1.5m Head Height.

\* As Defined by RICS - Code of Measuring Practice.



Marylebone 020 7486 8866

marylebone@carterjonas.co.uk

37 New Cavendish Street, Marylebone, London, W1G 9TL

**carterjonas.co.uk**

Offices throughout the UK

Exclusive UK affiliate of

**CHRISTIE'S**  
INTERNATIONAL REAL ESTATE

### IMPORTANT INFORMATION

These particulars are for general information purposes only and do not represent an offer or contract or part of one. Carter Jonas or anyone in their employment has made every attempt to ensure that the particulars and other information provided are as accurate as possible and they are not intended to amount to advice on which you should rely as being factually accurate. Full information which may be relevant to your decision regarding the property can be found on the property listing on carterjonas.co.uk or, (including off market properties) on the brochure or a separately available material information sheet. We would advise you to confirm the details of any material information prior to any offer being submitted. You should not assume that the property has all necessary planning, building regulations or other consents and Carter Jonas has not tested any services, facilities or equipment. Any measurements and distances given are approximate only. Where Carter Jonas has been provided with a floorplan by a third party, we cannot guarantee that the floorplan has been measured in accordance with IPMS. Purchasers must satisfy themselves of all of the aforementioned by independent inspection or otherwise. Our images only represent part of the property as it appeared at the time they were taken and do not represent the furnishings included; these are confirmed in a separate inventory. If you require further information, please contact us.

Classification L2 - Business Data