



MARKET PLACE, SOHO, W1W
£1,475 per week*

Carter Jonas

ORWELL STUDIOS, MARKET PLACE, SOHO, LONDON, W1W 8ER

- Air Conditioning
- Minimum Term 12 months
- Furnished
- 2 Bedrooms
- 2 Bathrooms
- Open plan kitchen / reception room

This bright, penthouse apartment is situated on the fifth floor of a small prestigious residential building with lift. The property has an abundance of natural light and is finished to a high standard. It benefits from high ceilings and air conditioning throughout and a long private terrace.

Tucked away on the borders of Fitzrovia and Soho close to the many boutique shops and restaurants nearby and in proximity of transport links. Soho has long been established as the entertainment district of London. With its fashionable upmarket restaurants, theatres, night life, film industry and China Town nestled amongst a vibrant residential area, it is diverse and charming.

Nearest Tube: Oxford Circus

AST

The deposit will be £8,850 at a rental value of £1,475 (asking price).

Holding deposit = 1 weeks rent of £1,475

Rent is not payable weekly

Deposit is 6 weeks rent (£1,475 pw = £8,850 deposit)

Nearest Tube: Oxford Circus

Council Tax Band = G

Minimum term 12 months

Heating electric storage heaters

Hot water electric emersion - off peak

A two bedroom penthouse with air conditioning throughout of approximately 997 square feet.



Energy Efficiency Rating		
	Current	Potential
Very energy efficient - lower running costs		
A (89+)		
B (81-88)		
C (69-80)	78	81
D (55-68)		
E (39-54)		
F (21-38)		
G (1-20)		
Not energy efficient - higher running costs		
England, Scotland & Wales		
EU Directive 2002/91/EC		

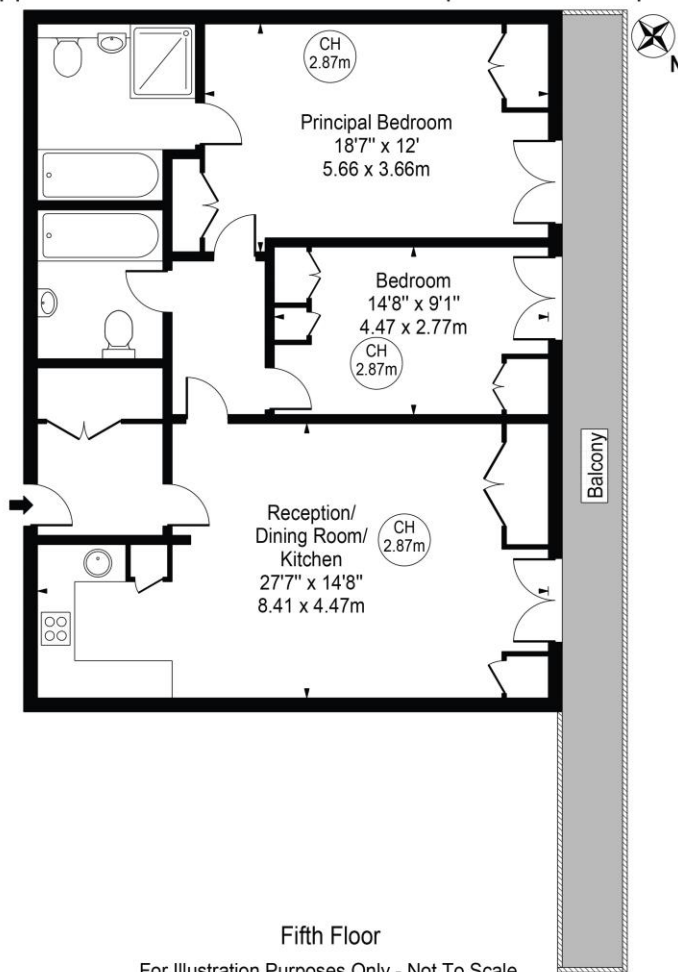
ADDITIONAL INFORMATION

Offers	Available for a minimum term of 12 months longer terms will be considered
Viewing	Strictly by appointment
Local Authority	Westminster City Council - Council Tax Band G
Directions	



Orwell Studios

Approx. Gross Internal Area 997 Sq Ft - 92.62 Sq M



This floor plan should be used as a general outline for guidance only and does not constitute in whole or in part an offer or contract. Any intending purchaser or lessee should satisfy themselves by inspection, searches, enquiries and full survey as to the correctness of each statement. Any areas, measurements or distances quoted are approximate and should not be used to value a property or be the basis of any sale or let. Copyright Morriarti Photography & Design LTD



T: 020 7493 0676

18 Davies Street, Mayfair, London, W1K 3DS

E: mayfair@carterjonas.co.uk



Exclusive UK affiliate of

CHRISTIE'S
INTERNATIONAL REAL ESTATE

Classification L2 - Business Data

IMPORTANT INFORMATION

These particulars are for general information purposes only and do not represent an offer or contract or part of one. Carter Jonas or anyone in their employment has made every attempt to ensure that the particulars and other information provided are as accurate as possible and they are not intended to amount to advice on which you should rely as being factually accurate. Full information which may be relevant to your decision regarding the property can be found on the property listing on carterjonas.co.uk or a separately available material information sheet, and we would advise you to confirm the details of any material information prior to any offer being submitted. You should not assume that the property has all necessary planning, building regulations or other consents and Carter Jonas has not tested any services, facilities, or equipment. Any measurements and distances given are approximate only. Where Carter Jonas has been provided with a floorplan by a third party, we cannot guarantee that the floorplan has been measured in accordance with IPMS. Purchasers or prospective tenants must satisfy themselves of all of the aforementioned by independent inspection or otherwise. Our images only represent part of the property as it appeared at the time they were taken and do not represent the furnishings included; these are confirmed in a separate inventory. If you require further information, please contact us. *Administration fees may apply depending on tenancy type. Please contact your local branch for this information.