



RICHMOND COURT, 200 SLOANE STREET, SW1X
£1,000 per week*

Carter Jonas

RICHMOND COURT, 200 SLOANE STREET, LONDON, SW1X 9QU

A one bedroom apartment of approximately 548 square feet.

- 24hr concierge
- Furnished
- 1 Bedroom
- 1 Bathroom
- Large Reception room
- Separate Kitchen
- Lift

Brand newly refurbished apartment situated on the seventh floor of this sought-after block with lift and 24 hour porter. Located within walking distance of Hyde Park, Sloane Square and Harrods it also the additional benefit of hot water, central heating and fibre-optic wifi included within the rent.

Stylish Belgravia is located on the edge of Hyde Park. It encompasses London's prime residential garden squares and is packed with Michelin-starred restaurants, specialist shops, historic buildings and residential dwellings.

Nearest Tube: Knightsbridge

Minimum term: 12 months

Council tax: Band F

EPC: D

AST

The deposit will be £5,000 at a rental value of £1,000 (asking price)

Holding deposit = 1 weeks rent of £1,000

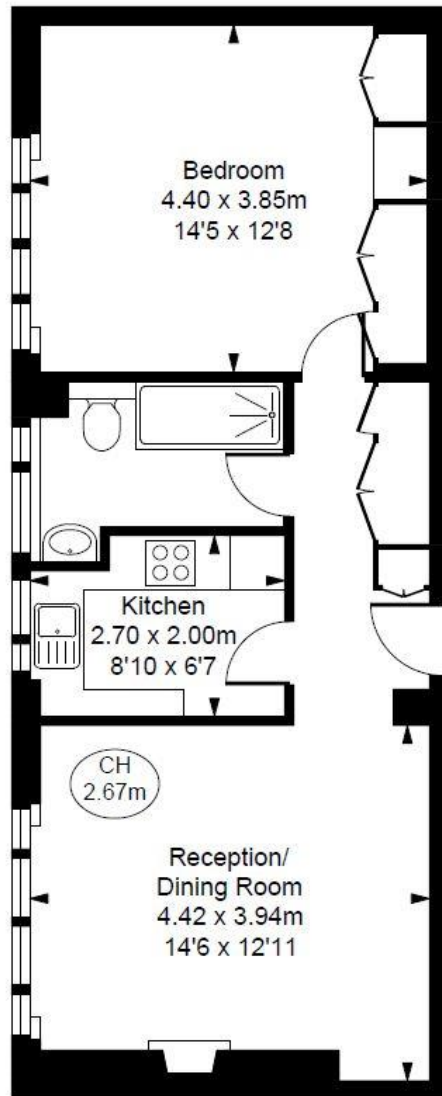
Deposit is 5 weeks rent (£1,000 pw = £5,000 deposit)



ADDITIONAL INFORMATION

Offers	Available for a minimum term of 12 months longer terms will be considered
Viewing	Strictly by appointment
Local Authority	Kensington & Chelsea Borough Council - Council Tax Band F
Directions	





Flat 64 Richmond Court,
200 Sloane Street, SW1X
Approximate Gross Internal Area
50.89 sq m / 548 sq ft
(CH = Ceiling Heights)



Seventh Floor

This plan is not to scale. It is for guidance and not for valuation purposes.
All measurements and areas are approximate only, and have been prepared in accordance with the current edition of the RICS Code of Measuring Practice.
© Fulham Performance

Energy Efficiency Rating		Current	Potential
Very energy efficient - lower running costs			
(92+)	A		
(81-91)	B		
(69-80)	C		
(55-68)	D		
(39-54)	E		
(21-38)	F		
(1-20)	G		
Not energy efficient - higher running costs			
England, Scotland & Wales		EU Directive 2002/91/EC	



T: 020 7493 0676

18 Davies Street, Mayfair, London, W1K 3DS

E: mayfair@carterjonas.co.uk



Exclusive UK affiliate of

CHRISTIE'S
INTERNATIONAL REAL ESTATE

Classification L2 - Business Data

IMPORTANT INFORMATION

Our property particulars do not represent an offer or contract, or part of one. The information given is without responsibility on the part of the agents, seller(s) or lessor(s) and you should not rely on the information as being factually accurate about the property, its condition or its value. Neither Carter Jonas LLP nor anyone in its employment or acting on its behalf has authority to make any representation or warranty in relation to this property. We have not carried out a detailed survey, nor tested the services, appliances or fittings at the property. The images shown may only represent part of the property and are as they appeared at the time of being photographed. The areas, measurements and distances are approximate only. Where Carter Jonas have been provided with a floorplan by a third party, we can not guarantee that the floorplan has been measured in accordance with IPMS. Any reference to alterations or use does not mean that any necessary planning permission, building regulation or other consent has been obtained. The VAT position relating to the property may change without notice. Administration fees may apply depending on tenancy type. Please contact your local branch for this information.