



BURY STREET, ST JAMES'S, SW1Y
£592.31 per week*

Carter Jonas

GEORGIAN HOUSE, BURY STREET, ST JAMES'S, LONDON,

A studio apartment of approximately 429 square feet

- Furnished
- Studio room
- Separate Kitchen
- Bathroom
- Lift Access
- Daytime porter

This refurbished apartment is situated in a period building with lift and caretaker, centrally located in St James's within walking distance of Piccadilly, Green Park and transport links.

St James's is one of the most exclusive residential areas of London with its' famous residences including Buckingham Palace, St James's Palace and Clarence House set amongst the open spaces of Green Park and St James's Park. Dominated by beautiful architecture, art and antique dealers and with some of the highest commercial rents in London, it is also home to many blue-chip companies and the best-known gentlemen's clubs frequented by English high society.

Nearest Tube: Green Park

AST

The deposit will be £2,566.67 at a rental value of £592.31 (asking price)

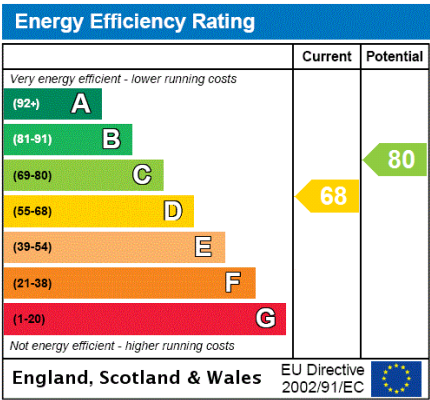
Holding deposit = 1 weeks rent of £592.31

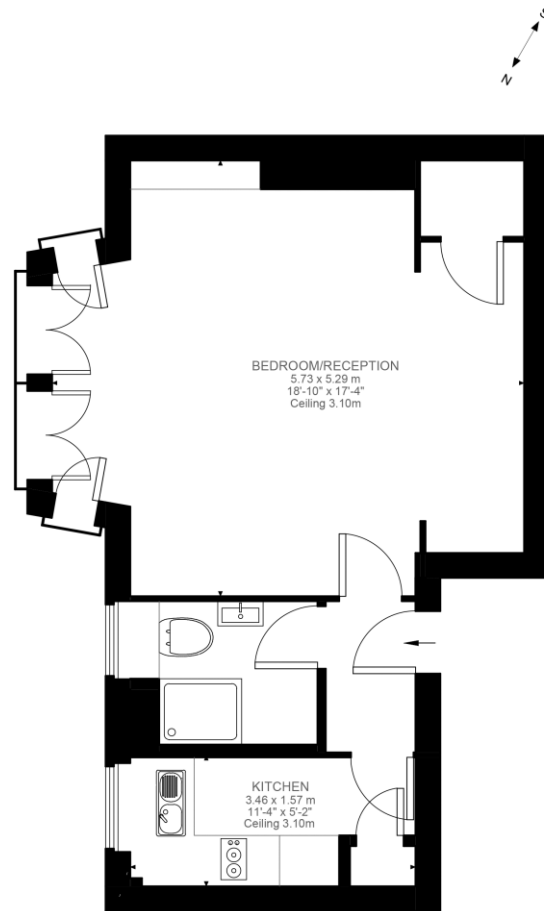
Deposit is 5 weeks rent (£592.31 pw = £2,566.67 deposit)



ADDITIONAL INFORMATION

Offers	Available for a minimum term of 12 months longer terms will be considered
Viewing	Strictly by appointment
Local Authority	Westminster - Council Tax Band E
Material Information	Communal heating and hot water Ultrafast broadband and mobile coverage available





Second Floor
429 ft²

Bury Street, SW1Y
Approximate Gross Internal Area
39.81 SQ.M / 429 SQ.FT

Illustration for identification purposes only. Not to scale.
Floor Plan Drawn According To RICS Guidelines.



T: 020 7493 0676

18 Davies Street, Mayfair, London, W1K 3DS

E: mayfair@carterjonas.co.uk



Exclusive UK affiliate of

CHRISTIE'S
INTERNATIONAL REAL ESTATE

Classification L2 - Business Data

IMPORTANT INFORMATION

These particulars are for general information purposes only and do not represent an offer or contract or part of one. Carter Jonas or anyone in their employment has made every attempt to ensure that the particulars and other information provided are as accurate as possible and they are not intended to amount to advice on which you should rely as being factually accurate. Full information which may be relevant to your decision regarding the property can be found on the property listing on carterjonas.co.uk or a separately available material information sheet, and we would advise you to confirm the details of any material information prior to any offer being submitted. You should not assume that the property has all necessary planning, building regulations or other consents and Carter Jonas has not tested any services, facilities, or equipment. Any measurements and distances given are approximate only. Where Carter Jonas has been provided with a floorplan by a third party, we cannot guarantee that the floorplan has been measured in accordance with IPMS. Purchasers or prospective tenants must satisfy themselves of all of the aforementioned by independent inspection or otherwise. Our images only represent part of the property as it appeared at the time they were taken and do not represent the furnishings included; these are confirmed in a separate inventory. If you require further information, please contact us. *Administration fees may apply depending on tenancy type. Please contact your local branch for this information.