



GLOUCESTER PLACE, MARYLEBONE, NW1
£1,154.86 per week*

Carter Jonas

FLAT 154, DORSET HOUSE, GLOUCESTER PLACE, MARYLEBONE, LONDON, NW1 5AH

- Three bedrooms
- Kitchen
- Dining area
- Lounge
- Terrace
- Two bathrooms
- Concierge

THE PROPERTY

This fully refurbished three-bedroom lateral apartment is located on the first floor (with lift) and provides the added benefit of private outside space.

Available for long term rental on a furnished basis.

Sharers will not be entertained.

Dorset House is a listed Grade II apartment block in Marylebone in the City of Westminster. It is a noted example of Art Deco architecture. Approx. a 3- minute walk to Baker Street.

Gloucester Place is ideally situated for the retail and entertainment options in Marylebone and St. Johns Wood, all of which are only 0.7 miles away, as well as the natural areas of close-by Regent's Park. It is situated just north of Dorset Square (approximately 320 meters). Marylebone Station, which serves the Jubilee, Bakerloo, Metropolitan, Circle, Hammersmith, and City lines, is conveniently situated (approximately 0.2 miles away), as is Baker Street Underground Station.

Holding deposit is 1 week's rent = £1,154.86 (at asking price)

Security deposit is 6 weeks rent = £6,929.16 (at asking price £1,154.86pw)

Minimum term 12 months

Council Tax Band F

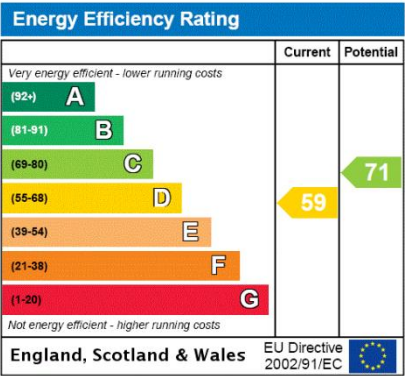
Beautifully refurbished three bedroom apartment located within an Art Deco block within close proximity to Baker Street.



For the latest information on broadband and mobile coverage, please visit [/checker.ofcom](#) for the most up-to-date details.

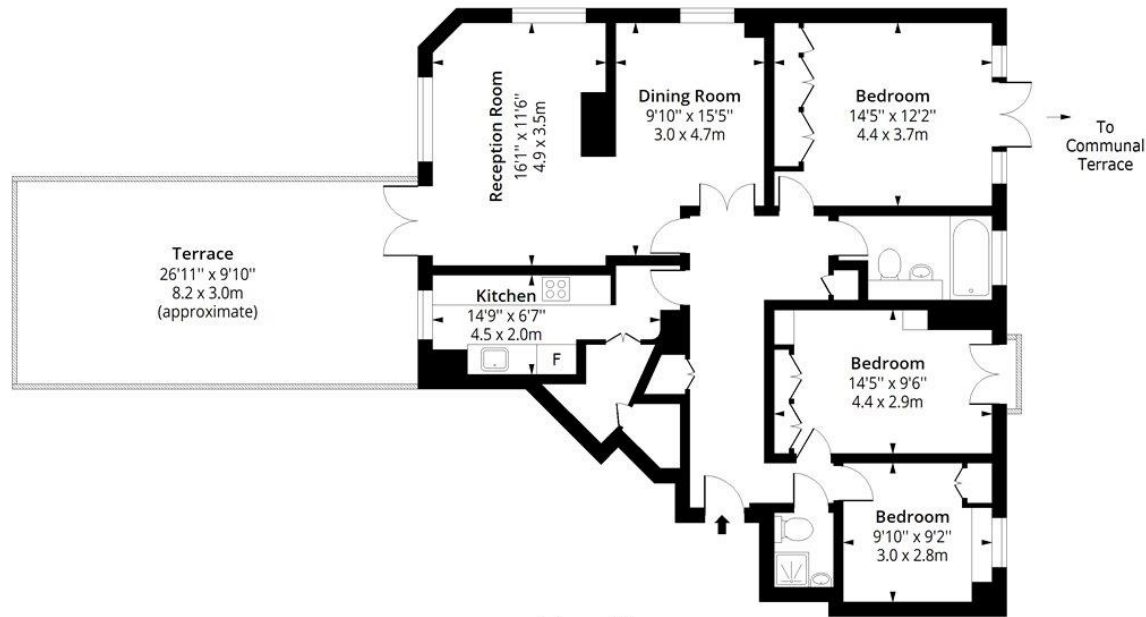
ADDITIONAL INFORMATION

Offers	Available for a minimum term of 12 months longer terms will be considered
Viewing	Strictly by appointment
Local Authority	Westminster City Council - Council Tax Band F



Dorset House, NW1

Approx. Gross Internal Area 1165 Sq Ft - 108.23 Sq M
Approx. Gross Terrace Area 265 Sq Ft - 24.62 Sq M



First Floor

Floor Area 1165 Sq Ft - 108.23 Sq M



Measured according to RICS IPMS2. Floor plan is for illustrative purposes only and is not to scale. Every attempt has been made to ensure the accuracy of the floor plan shown, however all measurements, fixtures, fittings and data shown are an approximate interpretation for illustrative purposes only. 1 sq m = 10.76 sq feet.

lpaplus.com

Date: 13/10/2022



T: 020 7486 8866

37 New Cavendish Street, London, W1G 9TL

E: marylebone.lettings@carterjonas.co.uk

A member of



Exclusive UK affiliate of

CHRISTIE'S
INTERNATIONAL REAL ESTATE

IMPORTANT INFORMATION

These particulars are for general information purposes only and do not represent an offer or contract or part of one. Carter Jonas or anyone in their employment has made every attempt to ensure that the particulars and other information provided are as accurate as possible and they are not intended to amount to advice on which you should rely as being factually accurate. Full information which may be relevant to your decision regarding the property can be found on the property listing on carterjonas.co.uk or a separately available material information sheet, and we would advise you to confirm the details of any material information prior to any offer being submitted. You should not assume that the property has all necessary planning, building regulations or other consents and Carter Jonas has not tested any services, facilities, or equipment. Any measurements and distances given are approximate only. Where Carter Jonas has been provided with a floorplan by a third party, we cannot guarantee that the floorplan has been measured in accordance with IPMS. Purchasers or prospective tenants must satisfy themselves of all of the aforementioned by independent inspection or otherwise. Our images only represent part of the property as it appeared at the time they were taken and do not represent the furnishings included; these are confirmed in a separate inventory. If you require further information, please contact us. *Administration fees may apply depending on tenancy type. Please contact your local branch for this information.