



**WEYMOUTH STREET, MARYLEBONE, W1G**  
£925 per week\*

**Carter Jonas**

## FLAT 1, WEYMOUTH STREET, MARYLEBONE, LONDON, W1G 7BW

- One Bedroom
- One Bathroom
- Living Area
- Kitchen
- Dressing Room
- WC
- Storage Space
- Unfurnished basis, or furnished (at separate cost)

### THE PROPERTY

A one-bedroom apartment available for rent on Weymouth Street in Marylebone. The property features a living room, a separate kitchen, a bedroom with an en-suite bathroom and dressing area, as well as a guest WC. It also offers ample storage space.

Within the Marylebone district of London, Weymouth Street is a pleasant and vibrant street. The street is well known for its selection of independent stores, cafes, and luxury restaurants, making it a desirable location for both locals and tourists. Excellent transportation options include the neighbouring Marylebone (about 1.1 miles), Euston (about 0.7 miles), Regent's Park (about 0.4 miles), Oxford Circus (about 0.4 miles), and Great Portland Street (about 0.3 miles) underground stations, as well as access to the West and Heathrow via the A40.

The Howard de Walden Estate is a renowned property portfolio situated in the heart of Marylebone, London, spanning 92 acres of premium real estate. Known for its elegant blend of historical architecture and modern living, the estate offers a wide range of high-quality residential and commercial properties. One of the key advantages of renting through The Howard de Walden Estate is the dedicated in-house property management team. They provide hands-on service, ensuring that residents' needs are met promptly and efficiently. This team takes care of everything from regular maintenance to urgent repairs, making the rental experience smooth and stress-free. Moreover, residents have access to a special discount card, offering exclusive deals and promotions at participating businesses throughout the estate. This card adds extra value to living on the Howard de Walden Estate, allowing residents to enjoy the vibrant local amenities with added perks.

Contemporary one bedroom apartment situated on the ground and lower ground floor of a period conversion in the heart of Marylebone.





Holding deposit is 1 week's rent = £925 (at asking price)

Security deposit is 5 week's rent = £4,625 (at asking price £925pw)

Minimum term 12 months

Council Tax Band F

Fibre Optic broadband provided by G Network is installed in the property for the tenant's use, as a complimentary service provided by the Howard de Walden Estate.

---

## ADDITIONAL INFORMATION

Offers	Available for a minimum term of 12 months longer terms will be considered
--------	---

Viewing	Strictly by appointment
---------	-------------------------

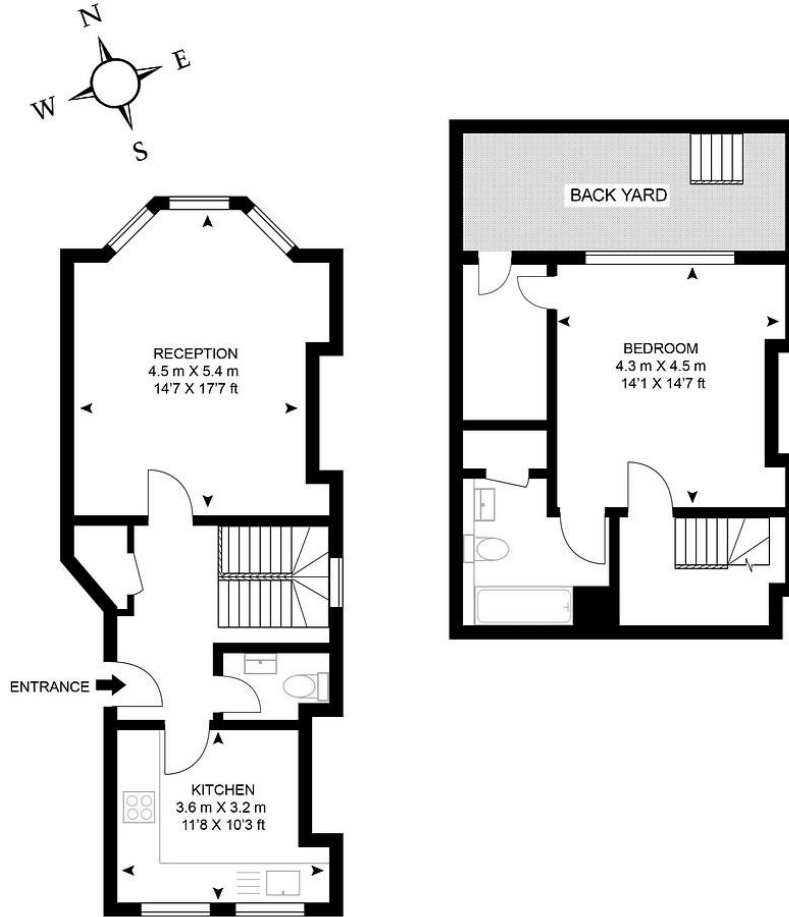
Local Authority	Westminster City Council - Council Tax Band F
-----------------	---

---



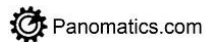
## Flat 1, 24 Weymouth Street

APPROX GROSS INTERNAL FLOOR AREA 936 SQ.FT ( 87 SQ.M.)



As Defined by RICS - Code of Measuring Practice

The Floor - plans are for representation purposes only and should be used as such by any prospective client.



T: 020 7486 8866

37 New Cavendish Street, London, W1G 9TL

E: marylebone.lettings@carterjonas.co.uk

A member of



Score	Energy rating	Current	Potential
92+	A		
81-91	B		
69-80	C	74 C	75 C
55-68	D		
39-54	E		
21-38	F		
1-20	G		

### IMPORTANT INFORMATION

These particulars are for general information purposes only and do not represent an offer or contract or part of one. Carter Jonas or anyone in their employment has made every attempt to ensure that the particulars and other information provided are as accurate as possible and they are not intended to amount to advice on which you should rely as being factually accurate. Full information which may be relevant to your decision regarding the property can be found on the property listing on [carterjonas.co.uk](http://carterjonas.co.uk) or a separately available material information sheet, and we would advise you to confirm the details of any material information prior to any offer being submitted. You should not assume that the property has all necessary planning, building regulations or other consents and Carter Jonas has not tested any services, facilities, or equipment. Any measurements and distances given are approximate only. Where Carter Jonas has been provided with a floorplan by a third party, we cannot guarantee that the floorplan has been measured in accordance with IPMS. Purchasers or prospective tenants must satisfy themselves of all of the aforementioned by independent inspection or otherwise. Our images only represent part of the property as it appeared at the time they were taken and do not represent the furnishings included; these are confirmed in a separate inventory. If you require further information, please contact us. \*Administration fees may apply depending on tenancy type. Please contact your local branch for this information.