



CHERRY TREE ROAD, WALES, S26
£1,275 per month*

Carter Jonas

CHERRY TREE ROAD, WALES, S26

A three bedroom detached brick built bungalow with a large rear garden.

Accommodation comprising entrance hall, open plan kitchen/living space, one further reception room, main bedroom with ensuite shower room and dressing area, two further bedrooms and separate family bathroom.

Externally there is a good sized rear enclosed garden with a large patio area, driveway and a single garage.

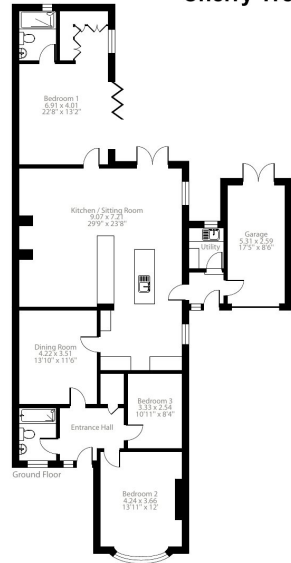
Available unfurnished from Mid - late November for a six or twelve month tenancy.

EPC Rating C. Council Tax Band C - Please see Rotherham Metropolitan Borough Council for current costs. No access to the loft. Mains gas, electricity, water and drainage are connected to the property. Gas central heating. Internet & Mobile: Further information on availability and speeds can be found at checker.ofcom.org.uk Flood Zone 1 - Low Risk

Holding deposit of 1 weeks rent £294

- Council Tax = C
- Deposit Required = £1,471.00
- Minimum term 6 months
- 3 Bedrooms
- 2 Bathrooms
- Kitchen/Living Area
- Dining Room
- Large Garden
- Garage
- Off street parking
- EPC = C

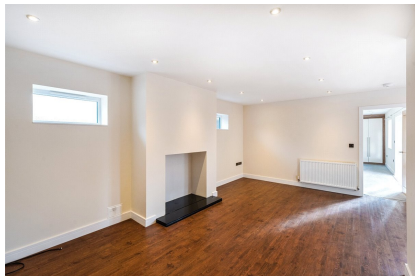
Energy Efficiency Rating		
	Current	Potential
Very energy efficient - lower running costs		
(92-100) A		
(81-91) B		
(69-80) C	69	79
(55-68) D		
(39-54) E		
(21-38) F		
(1-20) G		
Not energy efficient - higher running costs		
England, Scotland & Wales EU Directive 2002/91/EC		



Floor plan produced in accordance with RICS Property Measurement Standards incorporating International Property Measurement Standards (IPMS2 Residential). ©ndbchem 2024. Produced for Carter Jonas. REF: 1197799

Cherry Tree Road, Wales, Sheffield, S26

Approximate Area = 1571 sq ft / 145.9 sq m
Garage = 148 sq ft / 13.7 sq m
Total = 1719 sq ft / 159.6 sq m
For identification only - Not to scale



Oxford Lettings 01865 511444

oxfordresilettings@carterjonas.co.uk

Mayfield House, 256 Banbury Road, Oxford, Oxfordshire, OX2 7DE



Exclusive UK affiliate of

CHRISTIE'S
INTERNATIONAL REAL ESTATE
Classification L2 - Business Data

IMPORTANT INFORMATION

These particulars are for general information purposes only and do not represent an offer or contract or part of one. Carter Jonas or anyone in their employment has made every attempt to ensure that the particulars and other information provided are as accurate as possible and they are not intended to amount to advice on which you should rely as being factually accurate. Full information which may be relevant to your decision regarding the property can be found on the property listing on carterjonas.co.uk or a separately available material information sheet, and we would advise you to confirm the details of any material information prior to any offer being submitted. You should not assume that the property has all necessary planning, building regulations or other consents and Carter Jonas has not tested any services, facilities, or equipment. Any measurements and distances given are approximate only. Where Carter Jonas has been provided with a floorplan by a third party, we cannot guarantee that the floorplan has been measured in accordance with IPMS. Purchasers or prospective tenants must satisfy themselves of all of the aforementioned by independent inspection or otherwise. Our images only represent part of the property as it appeared at the time they were taken and do not represent the furnishings included; these are confirmed in a separate inventory. If you require further information, please contact us. *Administration fees may apply depending on tenancy type. Please contact your local branch for this information.