



**SANDWATH DRIVE, CHURCH FENTON, LS24**  
£1,400 per month\*

**Carter Jonas**



# SANDWATH DRIVE, CHURCH FENTON, LS24

A modern four bedroom detached house with garage, garden and driveway parking.

Accommodation comprises: Entrance Hall, Study, Dining Room, Sitting Room, Kitchen, Utility Room, Cloakroom WC. To the first floor is the Master Bedroom with En suite Shower Room, Three Further Bedrooms and separate Family Bathroom.

The property is accessed off a private driveway with attached garage, parking for one car and enclosed rear garden.

Available unfurnished from mid December for a 12 month tenancy.

No access to loft. Mains gas, electricity, water and drainage are connected to the property. Gas central heating. Pets considered.

Internet & Mobile. Further information on availability and speeds can be found at [checker.ofcom.org.uk](http://checker.ofcom.org.uk). Council Tax Band E please see North Yorkshire Council for current costs. EPC Rating – C. Flood Zone 1 - Low Risk

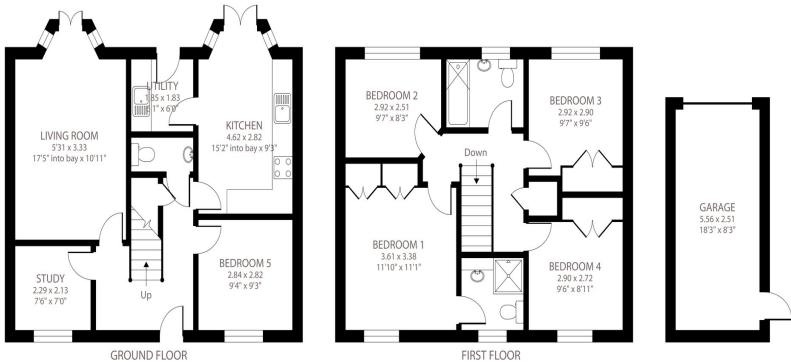
Holding deposit of 1 weeks rent £323

- Council Tax = E
- Deposit Required = £1,615.00
- 4 Bedrooms
- Two Bathrooms
- Garden
- Driveway Parking
- Garage
- Unfurnished
- EPC = C

Energy Efficiency Rating		
	Current	Potential
Very energy efficient - lower running costs		
(92+) A		
(81-91) B		87
(69-80) C	73	
(55-68) D		
(39-54) E		
(21-38) F		
(1-20) G		
Not energy efficient - higher running costs		
England, Scotland & Wales EU Directive 2002/91/EC		

Sandwath Drive, Church Fenton, Tadcaster, LS24

Approximate Area = 1258 sq ft / 116.8 sq m  
Garage = 152 sq ft / 14.1 sq m  
Total = 1410 sq ft / 130.9 sq m  
For identification only - Not to scale



Floor plan produced in accordance with RICS Property Measurement Standards incorporating International Property Measurement Standards (IPMS Residential). ©richcom 2021. Produced for Carter Jonas. REF: 762493



Oxford Lettings 01865 511444

[oxfordresilettings@carterjonas.co.uk](mailto:oxfordresilettings@carterjonas.co.uk)

Mayfield House, 256 Banbury Road, Oxford, Oxfordshire, OX2 7DE



Exclusive UK affiliate of

CHRISTIE'S  
INTERNATIONAL REAL ESTATE

Classification L2 - Business Data

## IMPORTANT INFORMATION

These particulars are for general information purposes only and do not represent an offer or contract or part of one. Carter Jonas or anyone in their employment has made every attempt to ensure that the particulars and other information provided are as accurate as possible and they are not intended to amount to advice on which you should rely as being factually accurate. Full information which may be relevant to your decision regarding the property can be found on the property listing on [carterjonas.co.uk](http://carterjonas.co.uk) or a separately available material information sheet, and we would advise you to confirm the details of any material information prior to any offer being submitted. You should not assume that the property has all necessary planning, building regulations or other consents and Carter Jonas has not tested any services, facilities, or equipment. Any measurements and distances given are approximate only. Where Carter Jonas has been provided with a floorplan by a third party, we cannot guarantee that the floorplan has been measured in accordance with IPMS. Purchasers or prospective tenants must satisfy themselves of all of the aforementioned by independent inspection or otherwise. Our images only represent part of the property as it appeared at the time they were taken and do not represent the furnishings included; these are confirmed in a separate inventory. If you require further information, please contact us. \*Administration fees may apply depending on tenancy type. Please contact your local branch for this information.