



**SHEFFIELD ROAD, BARLBOROUGH, S43**  
£1,700 per month\*

**Carter Jonas**



## **BEECH HOUSE, SHEFFIELD ROAD, BARLBOROUGH, CHESTERFIELD, DERBYSHIRE, S43 4TW**

- Entrance Hall
- Three Bedrooms
- Three Receptions
- Two Bathrooms
- Front and Rear Garden
- Off Road Parking
- 2 Basement Rooms

### **THE PROPERTY**

Accommodation comprising: Entrance hall, two reception rooms, kitchen, dining room, utility room leading to shower room.

To the first floor are three bedrooms, ensuite wc, and separate family bathroom.

To the front of the property there is off road parking and an area of lawn with mature raised borders. Two basement rooms (accessed from outside) of which one houses the boiler. Enclosed rear garden.

Available Early April for a six or twelve month tenancy on an unfurnished basis.

EPC - D Council Tax Band F - Please see Bolsover District Council for current costs.

Pets considered. No access to loft. Mains water and electricity are connected to the property. Drainage is to a septic tank. Oil central heating. Please note kitchen appliances (except for the range cooker) and window dressings are not supplied.

Internet & Mobile: Further information on availability and speeds can be found at [checker.ofcom.org.uk](http://checker.ofcom.org.uk)

Flood Risk Low

At a rent of £1,700 per calendar month.

Holding deposit of 1 weeks rent £392

Security deposit of 5 weeks rent £1,961

A three bedroom detached property built in 1915 situated within the Village of Barlborough with views over local countryside.



---

## ADDITIONAL INFORMATION

Offers	Available for a minimum term of 12 months longer terms will be considered
--------	---

Viewing	Strictly by appointment
---------	-------------------------

Local Authority	Bolsover District Council - Council Tax Band E
-----------------	--

Directions	
------------	--

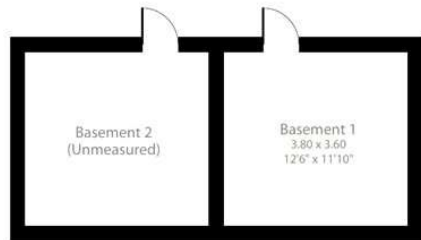




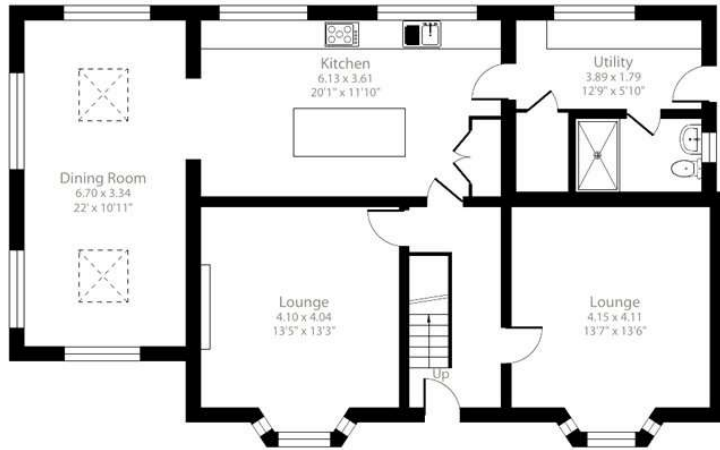
## Sheffield Road, Barlborough, Chesterfield, S43

Approximate Area = 2052 sq ft / 190.6 sq m (excludes basement 2)

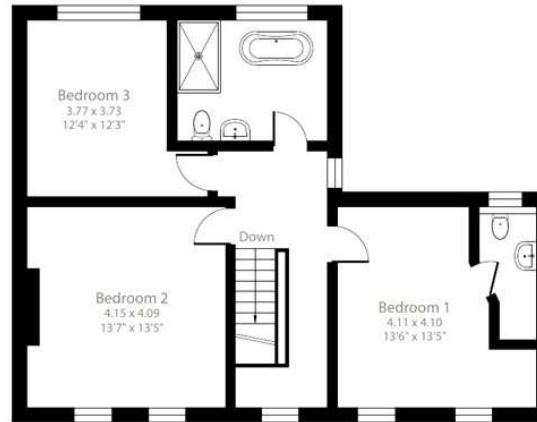
For identification only - Not to scale



Basement 1 / Basement 2



Ground Floor



First Floor

Floor plan produced in accordance with RICS Property Measurement 2nd Edition, Incorporating International Property Measurement Standards (IPMS2 Residential). © nichecom 2025. Produced for Carter Jonas. REF: 1229930



### IMPORTANT INFORMATION

These particulars are for general information purposes only and do not represent an offer or contract or part of one. Carter Jonas or anyone in their employment has made every attempt to ensure that the particulars and other information provided are as accurate as possible and they are not intended to amount to advice on which you should rely as being factually accurate. Full information which may be relevant to your decision regarding the property can be found on the property listing on [carterjonas.co.uk](http://carterjonas.co.uk) or a separately available material information sheet, and we would advise you to confirm the details of any material information prior to any offer being submitted. You should not assume that the property has all necessary planning, building regulations or other consents and Carter Jonas has not tested any services, facilities, or equipment. Any measurements and distances given are approximate only. Where Carter Jonas has been provided with a floorplan by a third party, we cannot guarantee that the floorplan has been measured in accordance with IPMS. Purchasers or prospective tenants must satisfy themselves of all of the aforementioned by independent inspection or otherwise. Our images only represent part of the property as it appeared at the time they were taken and do not represent the furnishings included; these are confirmed in a separate inventory. If you require further information, please contact us. \*Administration fees may apply depending on tenancy type. Please contact your local branch for this information.

T: 01865 511444

Mayfield House, 256 Banbury Road, Oxford, Oxfordshire, OX2 7DE

E: [oxfordresilettings@carterjonas.co.uk](mailto:oxfordresilettings@carterjonas.co.uk)

A member of



Exclusive UK affiliate of

**CHRISTIE'S**  
INTERNATIONAL REAL ESTATE

Classification L2 - Business Data