



**BOSTOCK ROAD, BOSTOCK, CW10**  
£1,600 per month\*

**Carter Jonas**



---

# BOSTOCK HALL, BOSTOCK ROAD, BOSTOCK, MIDDLEWICH, CHESHIRE, CW10 9JN

A 4 bedroom detached house in the  
Village of Bostock.

- 4 Bedrooms
- 2 Receptions
- 1 En suite Shower Room
- 1 Bathroom
- Kitchen
- Utility
- Conservatory
- Gardens
- Garage

## THE PROPERTY

Accommodation comprises - Ground Floor: Hallway, living room, dining room, kitchen, utility, conservatory. First Floor: 4 Bedrooms, 1 en suite shower room and a separate family bathroom.

Externally - Front and rear gardens, and a single garage.

No access to Loft. No white goods. Mains gas, electricity, water and drainage. Gas Heating. Flood Risk - Low.

Internet & Mobile: Further information on availability and speeds can be found at [checker.ofcom.org.uk](http://checker.ofcom.org.uk)

Available unfurnished from Early April 2025 for an initial 6 or 12 month term.

EPC Rating C. Council Tax Band G (please see Cheshire West and Chester Council Website for current cost)

At a rent of £1,600 per calendar month

Holding deposit of 1 week's rent £369

Security deposit of 5 weeks rent £1,846



---

## ADDITIONAL INFORMATION

Offers	Available for an initial 6 or 12 month term
Viewing	Strictly by appointment
Local Authority	Cheshire West and Chester Council - Council Tax Band G

---

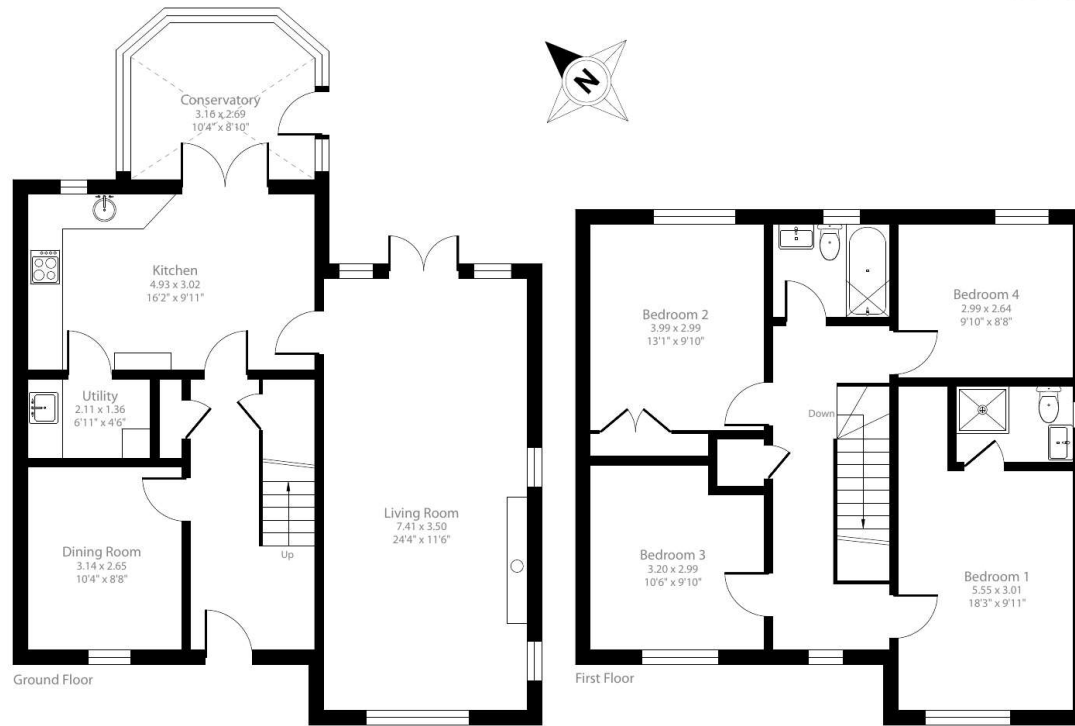




# Bostock Road, Bostock, Middlewich, CW10

Approximate Area = 1486 sq ft / 138 sq m

For identification only - Not to scale



Floor plan produced in accordance with RICS Property Measurement 2nd Edition, Incorporating International Property Measurement Standards (IPMS2 Residential). © nichecom2025. Produced for Carter Jonas. REF: 1252269

**T: 01865 511444**

Mayfield House, 256 Banbury Road, Oxford, Oxfordshire, OX2 7DE  
E: [oxfordresilettings@carterjonas.co.uk](mailto:oxfordresilettings@carterjonas.co.uk)



*Exclusive UK affiliate of*  
**CHRISTIE'S**  
INTERNATIONAL REAL ESTATE

Classification L2 - Business Data



## IMPORTANT INFORMATION

These particulars are for general information purposes only and do not represent an offer or contract or part of one. Carter Jonas or anyone in their employment has made every attempt to ensure that the particulars and other information provided are as accurate as possible and they are not intended to amount to advice on which you should rely as being factually accurate. Full information which may be relevant to your decision regarding the property can be found on the property listing on [carterjonas.co.uk](http://carterjonas.co.uk) or a separately available material information sheet, and we would advise you to confirm the details of any material information prior to any offer being submitted. You should not assume that the property has all necessary planning, building regulations or other consents and Carter Jonas has not tested any services, facilities, or equipment. Any measurements and distances given are approximate only. Where Carter Jonas has been provided with a floorplan by a third party, we cannot guarantee that the floorplan has been measured in accordance with IPMS. Purchasers or prospective tenants must satisfy themselves of all of the aforementioned by independent inspection or otherwise. Our images only represent part of the property as it appeared at the time they were taken and do not represent the furnishings included; these are confirmed in a separate inventory. If you require further information, please contact us. \*Administration fees may apply depending on tenancy type. Please contact your local branch for this information.