



**COMELYBANK DRIVE, MEXBOROUGH, S64**  
£650 per month\*

**Carter Jonas**



---

# COMELYBANK DRIVE, MEXBOROUGH, SOUTH YORKSHIRE, S64 0AA

- Entrance Hall
- Two Bedrooms
- Two Bathroom
- Kitchen/Living Room
- Front garden
- Unfurnished
- No Pets

## THE PROPERTY

Accommodation comprises - Ground Floor: Bedroom and Shower Room bathroom. First Floor: Open plan kitchen and living area. Second Floor: Second Floor Master bedroom with en suite shower room.

To the outside is a small lawned area to the front and one parking space. No rear garden.

Available unfurnished from late May for an initial six or twelve month tenancy.

No Pets. No access to loft. Mains gas, electricity, water and drainage are connected to the property. Gas central heating.

Internet & Mobile: Further information on availability and speeds can be found at [checker.ofcom.org.uk](http://checker.ofcom.org.uk)

EPC Rating C. Council Tax Band A (please see City of Doncaster Council for current cost)

Flood Risk - Low

At a rent of £650 per calendar month.

Holding deposit of 1 week's rent £150

Security deposit of 5 weeks rent £750

An end of terrace three storey two bedroom townhouse  
with allocated parking.



---

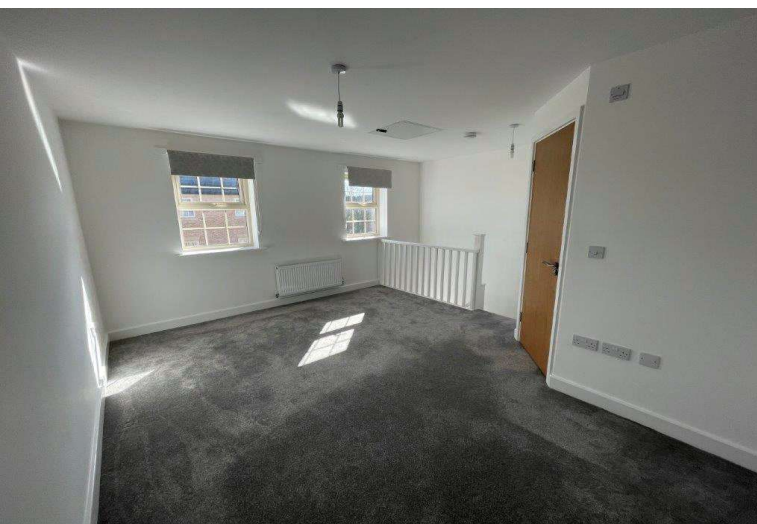
## ADDITIONAL INFORMATION

Offers	Available for a minimum term of 6 or 12 month
--------	---

Viewing	Strictly by appointment
---------	-------------------------

Local Authority	Council Tax Band A
-----------------	--------------------

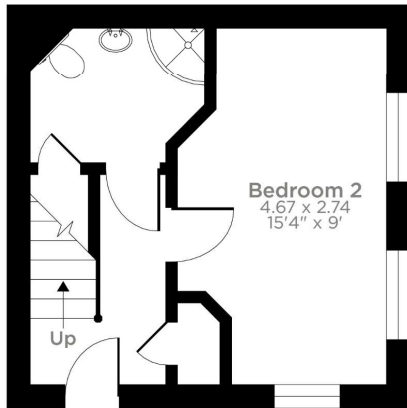
---



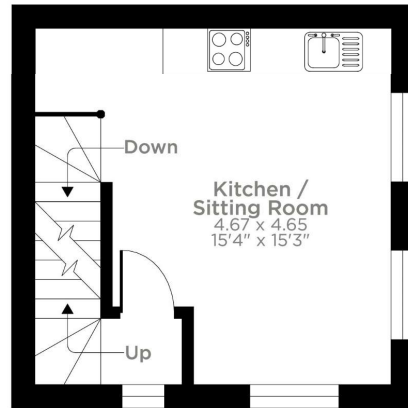


# Comelybank Drive, Mexborough, S64

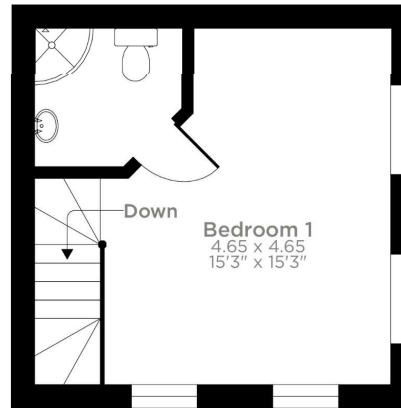
Approximate Area = 705 sq ft / 65.4 sq m  
For identification only - Not to scale



Ground Floor



First Floor



Secod Floor

**RICS** Certified Property Measurer  
Floor plan produced in accordance with RICS Property Measurement Standards incorporating International Property Measurement Standards (IPMS2 Residential). © nchecon 2024.  
Produced for Carter Jonas. REF: 1102991

**T: 01865 511444**

Mayfield House, 256 Banbury Road, Oxford, Oxfordshire, OX2 7DE  
E: oxfordresilettings@carterjonas.co.uk



*Exclusive UK affiliate of*

**CHRISTIE'S**  
INTERNATIONAL REAL ESTATE

Classification L2 - Business Data



## IMPORTANT INFORMATION

These particulars are for general information purposes only and do not represent an offer or contract or part of one. Carter Jonas or anyone in their employment has made every attempt to ensure that the particulars and other information provided are as accurate as possible and they are not intended to amount to advice on which you should rely as being factually accurate. Full information which may be relevant to your decision regarding the property can be found on the property listing on [carterjonas.co.uk](http://carterjonas.co.uk) or a separately available material information sheet, and we would advise you to confirm the details of any material information prior to any offer being submitted. You should not assume that the property has all necessary planning, building regulations or other consents and Carter Jonas has not tested any services, facilities, or equipment. Any measurements and distances given are approximate only. Where Carter Jonas has been provided with a floorplan by a third party, we cannot guarantee that the floorplan has been measured in accordance with IPMS. Purchasers or prospective tenants must satisfy themselves of all of the aforementioned by independent inspection or otherwise. Our images only represent part of the property as it appeared at the time they were taken and do not represent the furnishings included; these are confirmed in a separate inventory. If you require further information, please contact us. \*Administration fees may apply depending on tenancy type. Please contact your local branch for this information.