



RICHMOND ROAD, OXFORD, OX1
£3,750 per month*

Carter Jonas

RICHMOND ROAD, OXFORD, OX1 2JJ

A surprisingly spacious recently refurbished end of terraced Victorian house with accommodation over 3 floors and an extremely pretty courtyard garden

- 2 bedrooms
- study
- sitting room
- large kitchen/diner
- cellar
- 2 bathrooms
- large garage
- electric car charger
- attractive garden
- gardener included

THE PROPERTY

Situated in the heart of Jericho, an unusual terraced house with access on the side.

Accommodation consists: entrance hall, sitting room with gas fire, extended kitchen/breakfast room, cloakroom, basement cellar for storage only, main bedroom with ensuite shower room, bedroom 2, main bathroom and a converted loft room to be used as a study.

A pretty south west facing walled garden which will be maintained during the tenancy.

Large garage with EV charger.

Available early August for a minimum 12 month term on an unfurnished basis.

Council tax band E. EPC rating: E .

Flood Zone 1: Low probability of flooding.

Internet & Mobile Further information on availability and speeds can be found at checker.ofcom.org.uk.

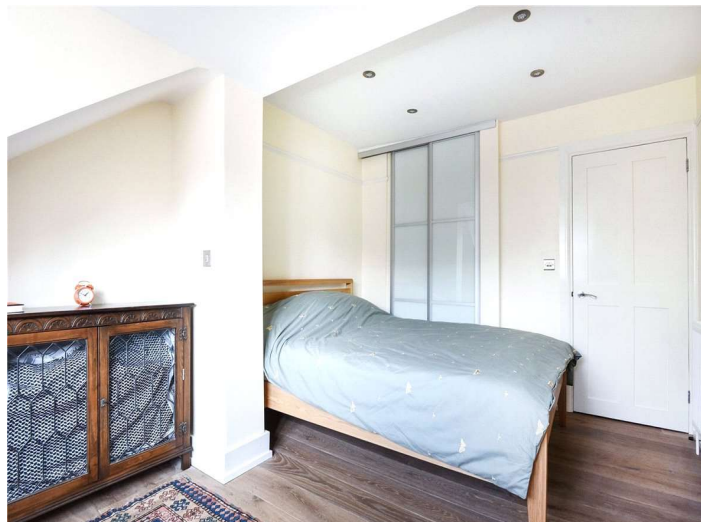
Holding deposit = 1 weeks rent of £865.00

Deposit is 5 weeks rent (£3,750 pcm = £4326.00 deposit)

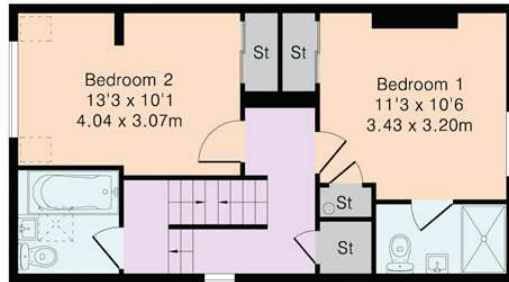


ADDITIONAL INFORMATION

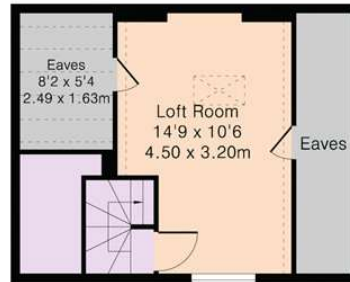
Offers	Available for a minimum term of 12 months longer terms will be considered
Viewing	Strictly by appointment
Local Authority	Oxford City Council - Council Tax Band E



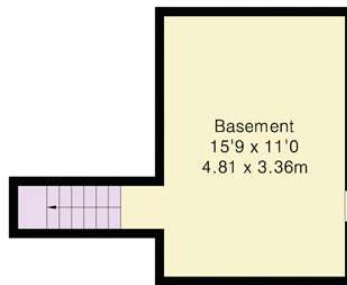
Approximate Gross Internal Area 1341 sq ft – 125 sq m
 Lower Ground Floor Area 160 sq ft – 15 sq m
 Ground Floor Area 545 sq ft – 51 sq m
 First Floor Area 439 sq ft – 41 sq m
 Second Floor Area 197 sq ft – 18 sq m



First Floor



Second Floor



Lower Ground Floor



Ground Floor



Although Pink Plan Ltd ensures the highest level of accuracy, measurements of doors, windows and rooms are approximate and no responsibility is taken for error, omission or misstatement. These plans are for representation purposes only as defined by RICS code of measuring practise. No guarantee is given on total square footage of the property within this plan. The figure icon is for initial guidance only and should not be relied on as a basis of valuation.

Carter Jonas

T: 01865 511444

Mayfield House, 256 Banbury Road, Oxford, Oxfordshire, OX2 7DE
 E: oxfordresilettings@carterjonas.co.uk

A member of



Exclusive UK affiliate of
CHRISTIE'S
 INTERNATIONAL REAL ESTATE

Classification L2 - Business Data



IMPORTANT INFORMATION

These particulars are for general information purposes only and do not represent an offer or contract or part of one. Carter Jonas or anyone in their employment has made every attempt to ensure that the particulars and other information provided are as accurate as possible and they are not intended to amount to advice on which you should rely as being factually accurate. Full information which may be relevant to your decision regarding the property can be found on the property listing on carterjonas.co.uk or a separately available material information sheet, and we would advise you to confirm the details of any material information prior to any offer being submitted. You should not assume that the property has all necessary planning, building regulations or other consents and Carter Jonas has not tested any services, facilities, or equipment. Any measurements and distances given are approximate only. Where Carter Jonas has been provided with a floorplan by a third party, we cannot guarantee that the floorplan has been measured in accordance with IPMS. Purchasers or prospective tenants must satisfy themselves of all of the aforementioned by independent inspection or otherwise. Our images only represent part of the property as it appeared at the time they were taken and do not represent the furnishings included; these are confirmed in a separate inventory. If you require further information, please contact us. *Administration fees may apply depending on tenancy type. Please contact your local branch for this information.