



WALDEMAR AVENUE, LONDON, SW6
£2,100 per month*

Carter Jonas

WALDEMAR AVENUE MANSIONS, WALDEMAR AVENUE, LONDON, SW6

- Large one bedroom mansion flat
- Very bright
- High ceilings
- Great built in storage
- Unfurnished
- Wood floors throughout

THE PROPERTY

This wonderful apartment is located on the top floor of this popular mansion building, featuring wood floors throughout, excellent built in wardrobes, fully fitted kitchen and a large reception.

Waldemar Avenue Mansions is located on a beautiful tree lined residential road very close to the good shopping and transport facilities of Parsons Green and the Fulham Road. Bishops Park with its riverside walk and sporting facilities are nearby. Putney Bridge and Parsons Green underground stations are only a short walk away.

LOCATION

Bishops Park is moments away and it has a Garden Centre called The Palace Gardener. You can take a stroll down the path along the River Thames and take in cinematic views all around you.

Bright and airy one bedroom apartment in a popular mansion.

EPC Grade: D



Holding deposit: 1 week's rent

Security deposit: 5 weeks' rent

Minimum term: 12 months

Council tax: Band D

Parking: on street via a permit

ADDITIONAL INFORMATION

Offers	Available for a minimum term of 12 months Longer terms will be considered
--------	--

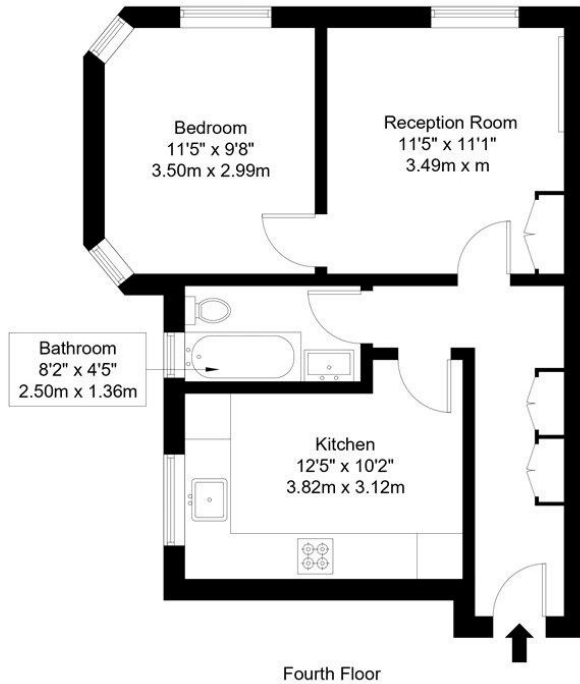
Viewing	Strictly by appointment
---------	-------------------------

Local Authority	- Council Tax Band D - Hammersmith and Fulham
-----------------	--



Waldemar Avenue, SW6 5LX

Approx Gross Internal Area = 46 sq m / 495 sq ft



Ref :

Copyright **BLEUPLAN**

The Floor plan is not to scale and measurements and areas shown are approximate and therefore should be used for illustrative purposes only. The plan has been prepared in accordance with the RICS code of Measuring Practice and whilst we have confidence in the information produced it must not be relied on. Maximum lengths and widths are represented on the floor plan. If there is any aspect of particular importance, you should carry out or commission your own inspection of the property.
Copyright @ BLEUPLAN

Energy Efficiency Rating		
	Current	Potential
Very energy efficient - lower running costs		
(91-100) A		
(81-90) B		
(69-80) C		
(55-68) D	60	67
(39-54) E		
(21-38) F		
(1-20) G		
Not energy efficient - higher running costs		
England, Scotland & Wales EU Directive 2002/91/EC		



T: 020 7751 8898

361 Fulham Palace Road, London, SW6 6TA

E: fulhamlettings@carterjonas.co.uk

A member of



Exclusive UK affiliate of

CHRISTIE'S
INTERNATIONAL REAL ESTATE

Classification L2 - Business Data

IMPORTANT INFORMATION

These particulars are for general information purposes only and do not represent an offer or contract or part of one. Carter Jonas or anyone in their employment has made every attempt to ensure that the particulars and other information provided are as accurate as possible and they are not intended to amount to advice on which you should rely as being factually accurate. Full information which may be relevant to your decision regarding the property can be found on the property listing on carterjonas.co.uk or a separately available material information sheet, and we would advise you to confirm the details of any material information prior to any offer being submitted. You should not assume that the property has all necessary planning, building regulations or other consents and Carter Jonas has not tested any services, facilities, or equipment. Any measurements and distances given are approximate only. Where Carter Jonas has been provided with a floorplan by a third party, we cannot guarantee that the floorplan has been measured in accordance with IPMS. Purchasers or prospective tenants must satisfy themselves of all of the aforementioned by independent inspection or otherwise. Our images only represent part of the property as it appeared at the time they were taken and do not represent the furnishings included; these are confirmed in a separate inventory. If you require further information, please contact us. *Administration fees may apply depending on tenancy type. Please contact your local branch for this information.