



BISHOPS MANSIONS, BISHOPS PARK ROAD, SW6
£460 per week*

Carter Jonas

BISHOPS MANSIONS, BISHOPS PARK ROAD, LONDON, SW6 6DZ

- 2 Bedrooms
- Reception Room
- Kitchen
- Bathroom
- Balcony
- EPC rating D

LOCATION

THE PROPERTY

The property comprises a good sized reception room to the front, large open plan kitchen with dining area, two bedrooms and a modern bathroom with shower.

The hallway offers good storage space throughout and the property also benefits from a balcony.

Bishops Mansions is considered to be the premier mansion block in Fulham, boasting an enviable location within striking distance of the super Bishops Park and the River Thames. Running towards the river off Fulham Palace Road, it is within easy reach of the local area's shops, restaurants and sports facilities (tennis courts and gym). Putney Bridge (District Line) is the closest underground station, and there is also a good bus service to Hammersmith along Fulham Palace Road and east towards South Kensington on the Old Brompton Road.

OUTSIDE

An exceptional two bedroom flat in the popular Bishops Mansions close to Bishops Park and Putney Bridge Tube Station. EPC rating D.



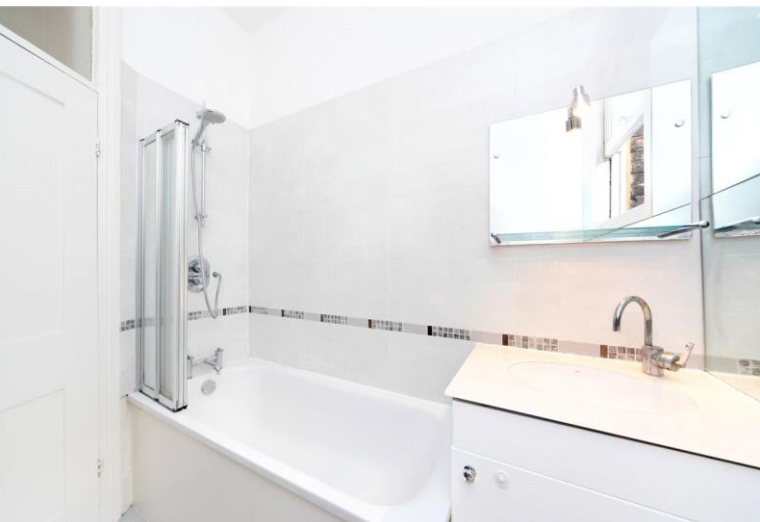
ADDITIONAL INFORMATION

Offers	Available for a minimum term of 12 months longer terms will be considered
--------	---

Viewing	Strictly by appointment
---------	-------------------------

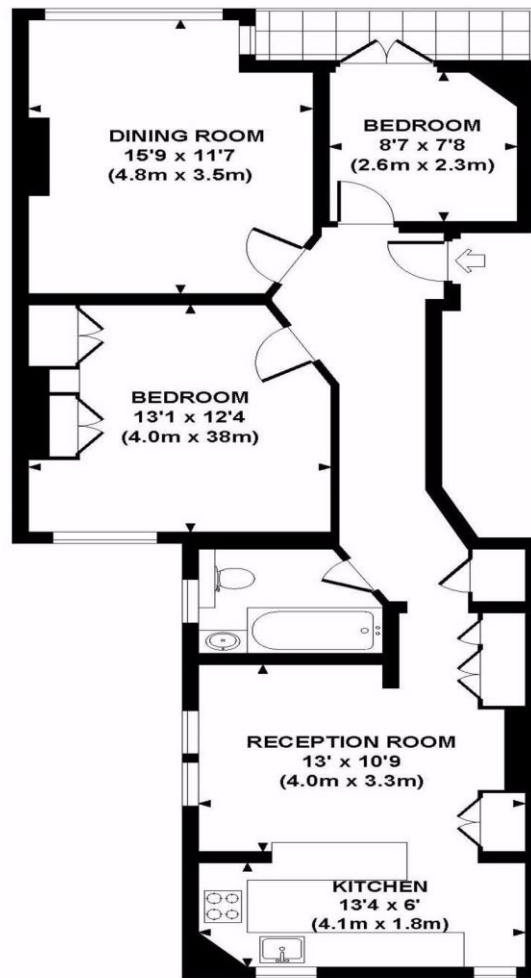
Local Authority	Hammersmith and Fulham - Council Tax Band
-----------------	---

Directions	
------------	--



BISHOPS MANSIONS, SW6

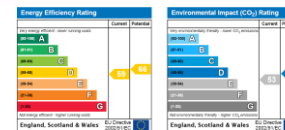
Approx. gross internal area
823 Sq Ft. / 77 Sq M.



FIRST FLOOR



All measurements are approximate and for illustration purposes only as defined by the RICS Code of Measuring Practice © 2012
Dowling Jones Design www.dowlingjones.com 020 7610 9933



T: 020 7751 8898

361 Fulham Palace Road, London, SW6 6TA

E: fulhamlettings@carterjonas.co.uk



Exclusive UK affiliate of

CHRISTIE'S
INTERNATIONAL REAL ESTATE

IMPORTANT INFORMATION

These particulars are for general information purposes only and do not represent an offer or contract or part of one. Carter Jonas or anyone in their employment has made every attempt to ensure that the particulars and other information provided are as accurate as possible and they are not intended to amount to advice on which you should rely as being factually accurate. Full information which may be relevant to your decision regarding the property can be found on the property listing on carterjonas.co.uk or a separately available material information sheet, and we would advise you to confirm the details of any material information prior to any offer being submitted. You should not assume that the property has all necessary planning, building regulations or other consents and Carter Jonas has not tested any services, facilities, or equipment. Any measurements and distances given are approximate only. Where Carter Jonas has been provided with a floorplan by a third party, we cannot guarantee that the floorplan has been measured in accordance with IPMS. Purchasers or prospective tenants must satisfy themselves of all of the aforementioned by independent inspection or otherwise. Our images only represent part of the property as it appeared at the time they were taken and do not represent the furnishings included; these are confirmed in a separate inventory. If you require further information, please contact us. *Administration fees may apply depending on tenancy type. Please contact your local branch for this information.