



INFILL SITE

Longstock, Stockbridge, Hampshire, SO20 6DP

Carter Jonas

INFILL SITE, LONGSTOCK, STOCKBRIDGE, HAMPSHIRE, SO20 6DP

- Sought after village location
- About 0.4 acres
- Site with planning approved for detached 5 bedroom family home. Proposed dwelling to include:
 - 5 Bedrooms • 4 Bathrooms • Lounge • Study • Snug
 - Kitchen • Family room

DESCRIPTION

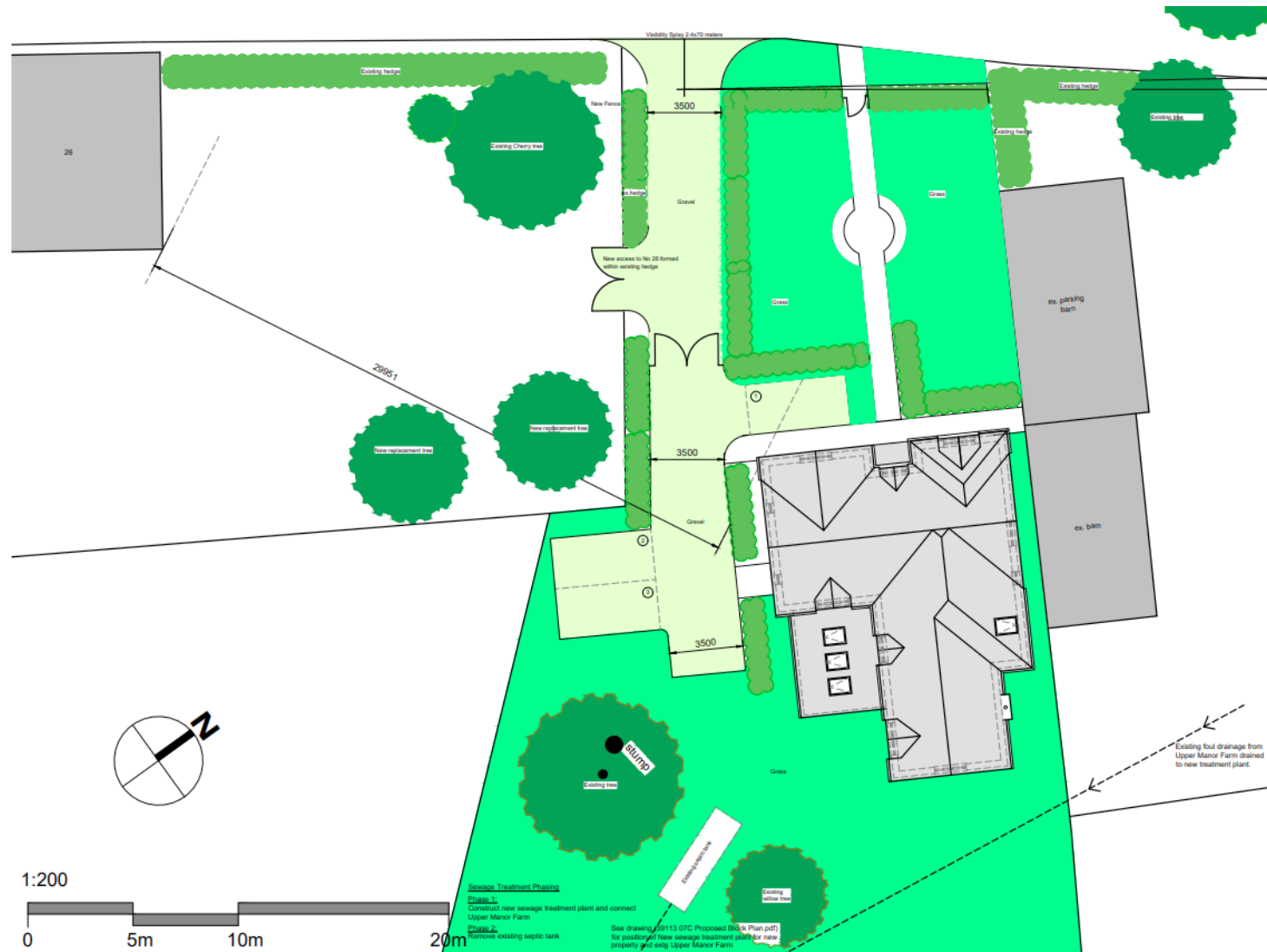
A level site of 0.384 acres with permission granted for a detached 5 bedroom family home in excess of 2,600 sq ft. The finished property will be constructed over two floors, with excellent accommodation including lounge, generous hallway, snug, study and kitchen / family room with adjoining boot room / utility room. The first floor accommodation will comprise 5 bedrooms, all with built in wardrobes and 3 with en suite bathrooms, and a further family bathroom.

There will be garden to the front and rear along with a driveway providing parking.

Full details of consent given can be found on www.testvalley.gov.uk using reference 21/02469/FULLN

The planning permission requires a vehicular point of access to be provided in order to allow access to the neighboring property, 26 Longstock as shown on the adjoining plan.

UNIQUE OPPORTUNITY TO ACQUIRE A SITE WITH FULL PLANNING PERMISSION FOR A 2,686 SQ FT FAMILY HOME IN THE EVER-POPULAR TEST VALLEY VILLAGE OF LONGSTOCK



LOCATION

The plot is superbly situated in the attractive and sought after village of Longstock. The renowned Peat Spade public house is 0.2 miles away, as are some beautiful walks through the stunning Test Valley. The famous Stockbridge High Street is approximately 1 ½ miles away and provides an excellent range of amenities including primary and senior schools, shops, and a doctor's surgery. It is renowned as a food centre and has several renowned pubs, restaurants, and cafes. The Test Valley itself is famous for its world class chalk stream trout fishing.

The historic Cathedral cities of Winchester and Salisbury with their extensive recreational facilities, restaurants and cultural venues are both within easy reach. Winchester approximately 10 miles, Salisbury approximately 16 miles. Mainline railway stations are at Andover and Winchester with mainline trains into Waterloo (approximately an hour from Winchester). There is easy access to the A34, A303 and M3.

ADDITIONAL INFORMATION

Tenure: Freehold

Services: TBC

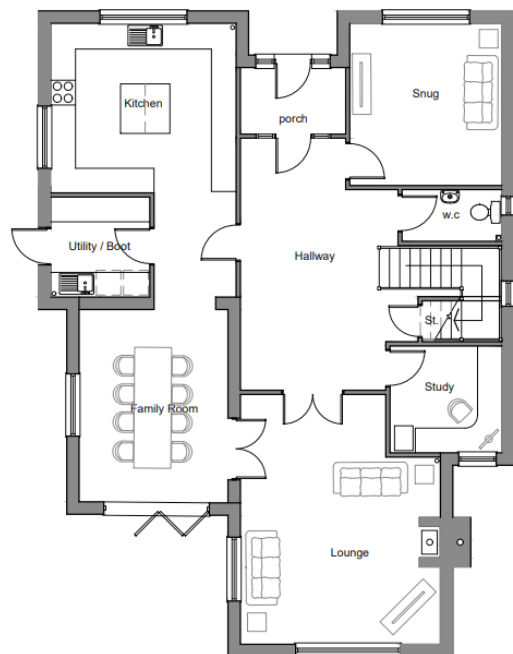
Local Authority: Hampshire County Council and Test Valley Borough Council.

Agents note: The planning permission states that the new owner of the Infill Site will be responsible for a shared drainage system with the neighbouring property. Further details are available on request.

What3Words: ///storeroom.proposes.louder



Ground Floor

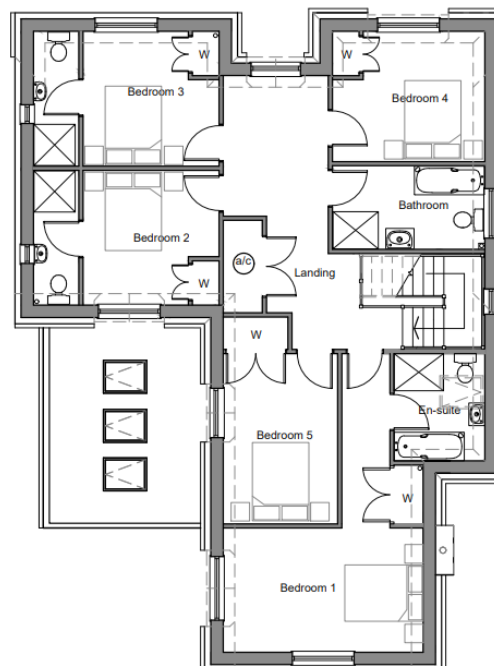


Ground Floor : 135sq.m

First Floor : 116sq.m

Total GIA : 251sq.m / 2686sq.ft

First Floor



Office 01962 842742

winchester@carterjonas.co.uk

9a Jewry Street, Winchester, Hampshire, SO23 8RZ

carterjonas.co.uk

Offices throughout the UK

Exclusive UK affiliate of

CHRISTIE'S
INTERNATIONAL REAL ESTATE

IMPORTANT INFORMATION

These particulars are for general information purposes only and do not represent an offer of contract or part of one. Carter Jonas has made every attempt to ensure that the particulars and other information provided are as accurate as possible and are not intended to amount to advice on which you should rely as being factually accurate. You should not assume that the property has all necessary planning, building regulations or other consents and Carter Jonas have not tested any services, facilities or equipment. Any measurements and distances given are approximate only. Purchasers must satisfy themselves of all of the aforementioned by independent inspection or otherwise. Although we make reasonable efforts to update our information, neither Carter Jonas LLP nor anyone in its employment or acting on its behalf makes any representations warranties or guarantees, whether express or implied, in relation to the property, or that the content in these particulars is accurate, complete or up to date. Our images only represent part of the property as it appeared at the time they were taken. If you require further information please contact us.