



**THE MEADOWS, SESSAY, THIRSK**  
£660,000

**Carter Jonas**



## SESSAY, THIRSK, YO7 3BE

### AN IMPRESSIVE DETACHED BUNGALOW, WITH STUNNING VIEWS OVER FIELDS, SET IN THE IDYLIC VILLAGE OF SESSAY.

This impressive detached bungalow, set within the charming village of Sessay, offers nearly 1,800 sq. ft. of living space—outstripping many four-bedroom executive homes in size and comfort. With sweeping views over the cricket ground and towards the iconic White Horse, this property combines substantial, flexible living with a picturesque setting. The generous layout is ideal for families seeking space or retirees looking for single-story living without compromising on room to breathe.

Inside, the bungalow features four double bedrooms, with two of the bedrooms boasting en-suite bathrooms, providing added convenience. The spacious lounge and dining room are perfect for both everyday living and entertaining, with French doors from the dining room leading to outdoor patios where you can enjoy the stunning surroundings. The kitchen, equipped with modern appliances and offering dual-aspect views, is the heart of the home, complemented by a utility room and ample storage space.

The property sits on a well maintained plot of over a third of an acre, featuring beautifully landscaped gardens that wrap around the home. A gated driveway leads to a detached garage, providing plenty of parking and storage. The south-facing patios offer a sunlit space to relax, while the expansive lawns and well-tended borders create a private oasis for outdoor activities and gatherings.

With no onward chain, this bungalow is a rare opportunity in one of Sessay's most sought-after locations. Its combination of size, setting, and thoughtful design makes it a standout choice for those looking to enjoy the best of village living with all the comforts of a modern home. Early viewing is highly recommended to fully appreciate what this exceptional property has to offer.

**TENURE** Freehold

**LOCAL AUTHORITY** North Yorkshire Council

**EPC BAND** D







Classification L2 - Business Data

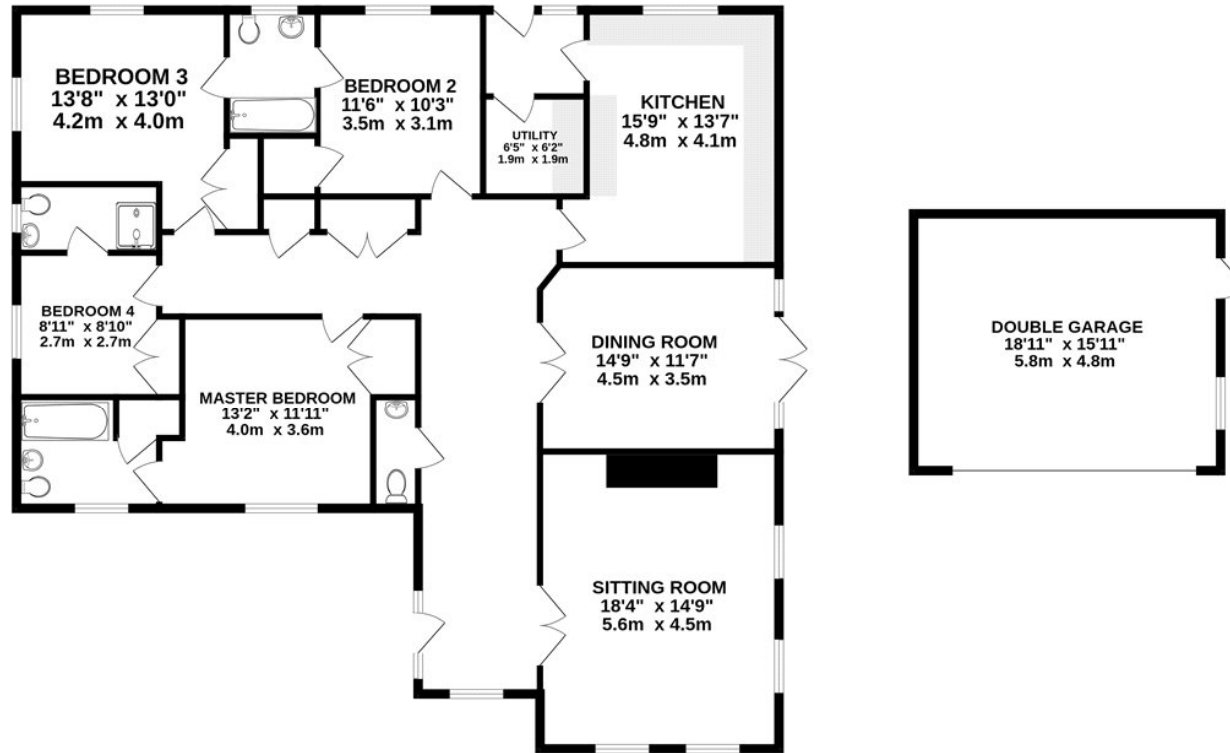




Classification L2 - Business Data

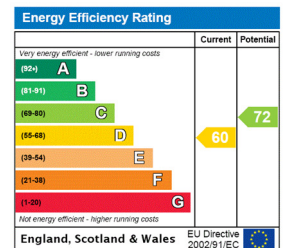


# GROUND FLOOR 1750 sq.ft. (162.6 sq.m.) approx.



TOTAL FLOOR AREA : 1750 sq.ft. (162.6 sq.m.) approx.

Whilst every attempt has been made to ensure the accuracy of the floorplan contained here, measurements of doors, windows, rooms and any other items are approximate and no responsibility is taken for any error, omission or mis-statement. This plan is for illustrative purposes only and should be used as such by any prospective purchaser. The services, systems and appliances shown have not been tested and no guarantee as to their operability or efficiency can be given.  
Made with Metropix ©2024



York 01904 558200

york@carterjonas.co.uk  
82 Micklegate, York, YO1 6LF

carterjonas.co.uk  
Offices throughout the UK

Exclusive UK affiliate of

**CHRISTIE'S**  
INTERNATIONAL REAL ESTATE

Classification L2 - Business Data

## IMPORTANT INFORMATION

These particulars are for general information purposes only and do not represent an offer of contract or part of one. Carter Jonas has made every attempt to ensure that the particulars and other information provided are as accurate as possible and are not intended to amount to advice on which you should rely as being factually accurate. You should not assume that the property has all necessary planning, building regulations or other consents and Carter Jonas have not tested any services, facilities or equipment. Any measurements and distances given are approximate only. Purchasers must satisfy themselves of all of the aforementioned by independent inspection or otherwise. Although we make reasonable efforts to update our information, neither Carter Jonas LLP nor anyone in its employment or acting on its behalf makes any representations warranties or guarantees, whether express or implied, in relation to the property, or that the content in these particulars is accurate, complete or up to date. Our images only represent part of the property as it appeared at the time they were taken. If you require further information please contact us.